

# ABF 2022 Admitted Patient Price List

---

**DRG Prices  
for  
Inpatients  
and  
Daycases  
2022**

---



The information contained in this document is intended for the use of the individual or organisation to whom it is addressed, and should not be copied, distributed or quoted without the prior permission of the Healthcare Pricing Office (HPO) of the Health Services Executive (HSE).

## Table of Contents

<b>Introduction</b>		<b>ii</b>
<b>Diagnosis Related Groups</b>		<b>iii</b>
<b>Weighted Units, Base Price and Relative Values</b>		<b>v</b>
<b>Flow Chart for Applying the ABF Price List</b>		<b>vi</b>
<b>Pseudocode for Applying the ABF Price List</b>		<b>vii</b>
<b>Important Notes on Using the Price List</b>		<b>x</b>
	<b>Inpatients</b>	<b>Daycases</b>
<b>UNRELATED OR DRGS</b>	1	23
<b>ERROR DRGs</b>	1	23
<b>PRE- MDC</b>	1	23
<b>MDC 1</b> D&D <sup>1</sup> of the Nervous System	1	23
<b>MDC 2</b> D&D of the Eye	3	24
<b>MDC 3</b> D&D of the Ear, Nose & Throat	4	25
<b>MDC 4</b> D&D of the Respiratory System	4	26
<b>MDC 5</b> D&D of the Circulatory System	6	27
<b>MDC 6</b> D&D of the Digestive System	8	28
<b>MDC 7</b> D&D of the Hepatobiliary System & Pancreas	9	29
<b>MDC 8</b> D&D of the Musculoskeletal System & Connective Tissue	10	30
<b>MDC 9</b> D&D of the Skin, Subcutaneous Tissue & Breast	12	31
<b>MDC 10</b> Endocrine, Nutritional & Metabolic D&D	13	32
<b>MDC 11</b> D&D of the Kidney & Urinary Tract	14	33
<b>MDC 12</b> D&D of the Male Reproductive System	15	33
<b>MDC 13</b> D&D of the Female Reproductive System	15	34
<b>MDC 14</b> Pregnancy, Childbirth & Puerperium	16	34
<b>MDC 15</b> Newborns & other Neonates	17	35
<b>MDC 16</b> D&D of the Blood & Blood Forming Organs & Immunological Disorders	17	35
<b>MDC 17</b> Neoplastic Disorders (Haematological and Solid Neoplasms)	18	35
<b>MDC 18</b> Infectious & Parasitic Diseases	18	36
<b>MDC 19</b> Mental D&D	19	36
<b>MDC 20</b> Alcohol/Drug Use & Alcohol/Drug Induced Organic Mental Disorders	19	36
<b>MDC 21</b> Injuries, Poisonings & Toxic Effects of Drugs	19	36
<b>MDC 22</b> Burns	20	37
<b>MDC 23</b> Factors influencing health status & other contacts with health services	21	37

---

<sup>1</sup> D&D refers to Diseases and Disorders

## Introduction

The introduction of Activity Based Funding (ABF) in January 2016 represented a significant change to the way in which budgets are allocated to acute hospitals in Ireland and to the role of Diagnosis Related Groups (DRGs) and Casemix methodologies in determining those budgets. The move to ABF was a move from a block granted funding system with Casemix adjustments applied for efficiency to a system whereby Casemix methodologies are used to fund hospitals based on the activity they carry out.

Any ABF funding system relies on there being a relatively stable relationship between cost and activity across years so that prior cost and activity profiles can be used to estimate future funding requirements. The arrival of the Covid-19 pandemic in Ireland in March 2020 and the resulting response by our health services caused a major disruption to the relationship between cost and activity. Our publicly funded acute hospitals were emptied out in order to create capacity for treating Covid-19 patients. At the same time, significant additional expense was incurred in order to ensure as safe as possible an environment in our public hospitals while also securing additional capacity in the private hospital sector. This upheaval resulted in a cost to activity relationship in 2020 and 2021 which was different to that expected in a non-pandemic environment. As a result, a decision was taken that acute hospitals should be funded on a block grant basis in 2022.

This ABF 2022 Price List details the ABF monetary value of each episode of inpatient and day case care carried out based on the DRG assignment and length of stay (LOS) of each treated patient. The prices reflect a best estimate of the ABF funding each case type would attract under normal ABF operation. These prices will be used in monthly ABF reporting to allow hospitals to continue to review their performance in an ABF context and to retain the insights afforded by ongoing ABF monitoring. The continuation of ABF practices during this short term return to block funding will ensure that hospitals maintain a focus on ABF activities and are well placed to re-engage with ABF on its post-pandemic re-introduction.

Activity in Outpatient Departments (OPD) and Emergency Departments (ED) are currently not within the scope of ABF and are therefore not included in this document.

## Diagnosis Related Groups

Diagnosis Related Groups are a means of classifying patient hospital encounters into a manageable number of groups which can be used to describe the mix of cases or Casemix of the activity being carried out by a hospital. The DRGs are designed to group cases which are clinically similar and which are expected to consume a similar amount of resources. DRGs and Casemix systems are widely used internationally to manage and fund healthcare systems as well as for performance and quality monitoring.

Currently Ireland is using version 8.0 of the Australian Refined DRG system (AR-DRG v8.0) and the prices contained in this document are intended for use with data grouped using that classification.

The AR-DRG classification has a hierarchical structure. The topmost level is the Major Diagnostic Category (MDC) which categorises cases roughly along body system lines. Within MDC, cases are further partitioned into surgical, medical and other categories depending on whether the case involved an operating room (OR) procedure, a non-OR procedure or neither an OR nor a Non-OR procedure. Within these partitions, cases are assigned to Adjacent DRGs (ADRGs) which contain a number of DRGs which are generally defined by the same diagnosis or procedure lists. The DRG is the lowest level in the classification and it splits out ADRGs by differing complexity levels. Here complexity is an indication of the resource consumption associated with the cases in a DRG and may not correspond to a clinical interpretation of the complexity of a case.

There are 406 ADRGs and 807 DRGs within the AR-DRG classification system. 85 of the ADRGs have no further split by complexity level while the remaining 321 ADRGs are split by complexity to make up 722 DRGs.

The DRGs are identified by a 4 character code followed by a description of the DRGs content. The first character in the code is alphabetic and refers to the MDC that the DRG belongs to. The second and third characters are numeric and they identify both the partition and the ADRG to which the DRG belongs. The fourth character identifies the complexity level associated with the DRG.

Partitions are identified in the DRG code as follows:

- DRGs numbered 01-39 indicate that they are surgical
- DRGs numbered 40-57 indicate that they are “other”
- DRGs numbered 60-99 indicate that they are medical

Complexity levels are identified as A, B, C, D or Z where A indicates the DRG with the highest complexity level, D the DRG with the lowest complexity level and Z indicates that there is no complexity split within the ADRG. Not all ADRGs will contain DRGs corresponding to all 4 complexity levels. The precise meaning of the complexity level is specific to each ADRG and is given in the DRG description.

## Example of DRG Code Structure, I04B Knee replacement, minc

I04B Knee replacement, minc

I indicates MDC 08 Diseases and disorders of the musculoskeletal system and connective tissue

04 is the ADRG number and indicates that this is a surgical DRG

B indicates a case of minor complexity

Throughout the AR-DRG system several abbreviations are used to indicate the level of severity and/or complications associated with a particular DRG. These are listed below.

+/-	With/Without
EXTC	Extreme Complexity
MAJC	Major Complexity
INTC	Intermediate Complexity
MINC	Minor Complexity

## Weighted Units, Base Price and Relative Values

The generic currency of the ABF system is referred to as the Weighted Unit (WU). The WU is a relative measure of the resource consumption of cases in an ABF system and is set so that the average resource consumption or WU level across all cases to be funded is 1. In this way cases which consume more resources than average have a WU value greater than 1 and those which consume fewer resources than average have a WU value less than 1.

Associated with the notion of a WU is the concept of a base price. The base price is the monetary value associated with 1 WU and is therefore the average value per case across all cases to be funded. The monetary value of any case can be calculated by multiplying its WU value by the base price.

As inpatients and day cases are treated separately in the modelling process there is a separate base price calculated for each of these patient types. As the base price is the value of 1 WU it follows that the definition of a WU for inpatients is not the same as that for day cases and the two cannot be directly combined. To obtain the price to be paid for both inpatients and daycases the RVs (see definition below) specific to each setting must be applied to derive the WU value and the base price for each patient type must then be applied to derive the individual prices. Only at this point can the two be combined to get an overall total.

The DRG prices presented in this document are given in terms of relative values (RVs). Relative values express the prices of the various payments for each DRG in terms of WUs. The RVs are used to determine the total WU value for a case and hence the price to be paid for that case.

Most DRGs will have a separate RV quoted for:

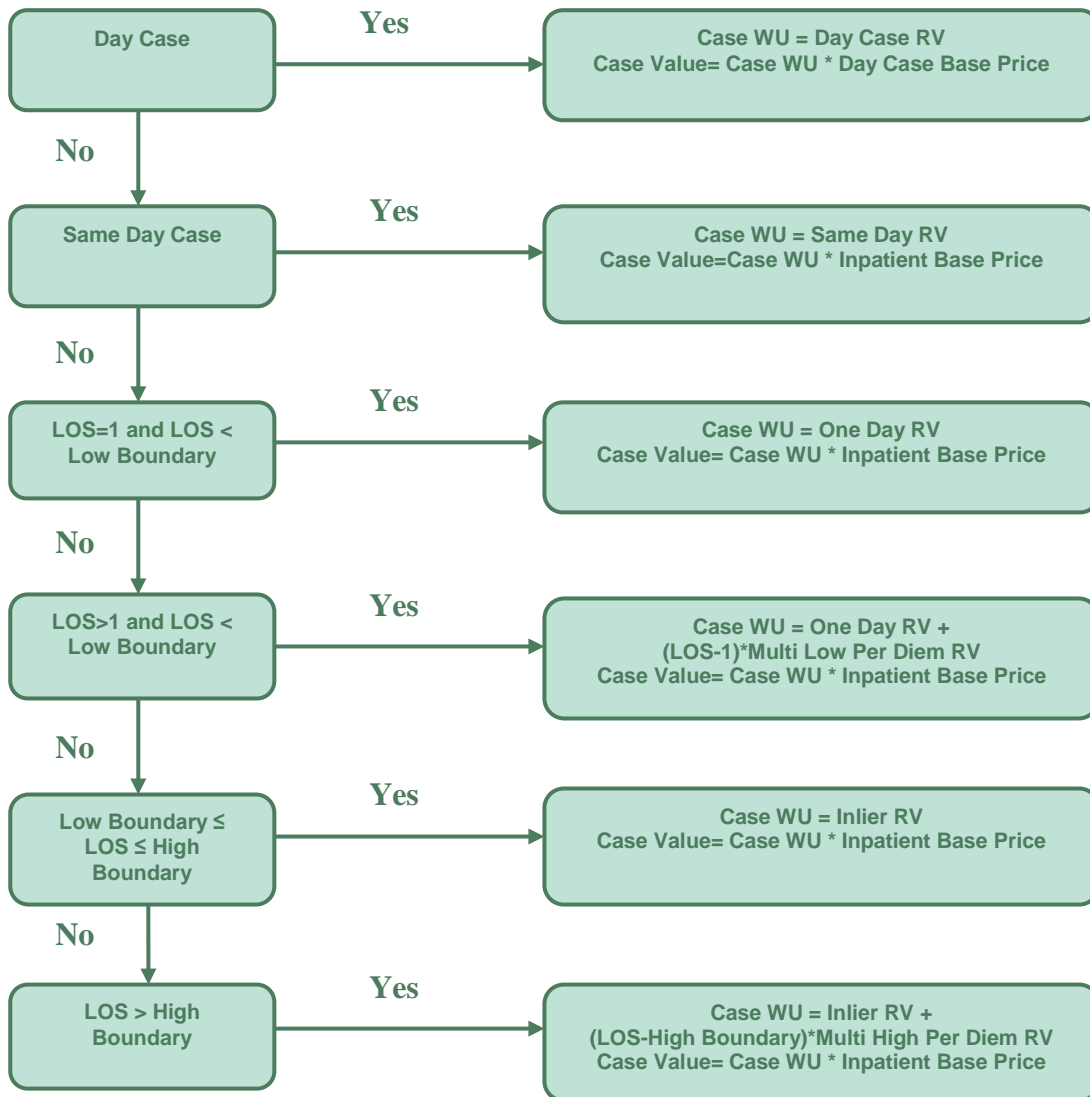
- Daycases
- Sameday Cases
- One Day Cases
- Low Outlier Per Diem
- Inlier Cases
- High Outlier Per Diem

The inpatient base price for 2022 is €5,496 and the daycase base price for 2022 is €841.

The relative values and prices presented in this document are applicable to the entire episode of care from admission to an inpatient or daycase bed to discharge from hospital. They cannot be used to infer either a cost or price for the treatment of a particular diagnosis, or the provision of a particular intervention or procedure in isolation of the entire episode of care. The HPO does not provide pricing information for individual diagnoses, interventions or procedures.

## Flow Chart for Applying the ABF Price List

The flow chart below describes how to correctly implement the ABF 2022 Price List.



### Notes:

1. Daycases are identified using HIPE question 16 - *Was this a daycase? (A day case is a patient who is admitted to hospital on an elective basis for care and/or treatment which does not require the use of a hospital bed overnight and who is discharged as scheduled)*
2. Length of stay is calculated as date of discharge - date of admission. The length of stay for cases admitted and discharged on the same day is set to 0.5.
3. Same day cases are defined as **non-elective inpatient discharges** which are admitted and discharged on the same date i.e. date of discharge=date of admission. Same day cases are distinct from day cases as defined in note 1 above.



## Pseudocode for Applying the ABF Price List

```
IF DISCHARGE_DATE-ADMISSION_DATE=0 THEN LOS=0.5;  
ELSE LOS= DISCHARGE_DATE-ADMISSION_DATE
```

```
IF DAYCASE INDICATOR=1 THEN DO;  
    WU=DAYCASE;  
    VALUE=WU*DAYCASE_BASEPRICE;  
END;
```

```
ELSE IF DAYCASE INDICATOR=0 THEN DO;
```

```
    IF LOS=0.5 THEN WU=SAMEDAY;  
    ELSE IF LOS=1 AND LBOUND GT 1 THEN WU=ONEDAY;  
    ELSE IF LOS>=2 AND LOS< LBOUND THEN WU=ONEDAY+(LOS-1)*MULTILOW;  
    ELSE IF LOS>=1 AND LOS>= LBOUND AND RAWLOS<=HBOUND THEN WU=INLIER;  
    ELSE IF LOS>=2 AND LOS> HBOUND THEN WU=INLIER+(LOS- HBOUND)*MULTIHIGH;
```

```
    VALUE=WU*INPATIENT_BASEPRICE;
```

```
END;
```

Notes: Length of stay is calculated as date of discharge - date of admission. The length of stay for cases admitted and discharged on the same day is set to 0.5.  
Lbound and Hbound represent the low and high length of stay boundaries.

### Example I04B Knee replacement, minc (Inpatient)

Low Boundary = 2 days  
High Boundary = 9 days  
Inlier Price = €11,705

Length of Stay	Case Type	WU Calculation	WU	Price Paid
0.5	Same Day	1.369	1.369	€7,525
1	One Day	1.623	1.623	€8,919
7	Inlier	2.130	2.130	€11,705
12	High Outlier	$2.130+3*0.233$	2.829	€13,515

Notes:

The values presented in this table have been rounded therefore multiplying the WU value by the base price will not yield the exact price to be paid.

\* WU here refers to daycase WU and the value is derived by multiplying the day case WU by the day case base price.

### I04B Knee replacement, Minor Complications Payment Curve



## Important Notes on Using the Price List

The following technical notes should be understood and adhered to when using the information contained in the price list.

1. The weighted unit values and prices quoted in this document are intended for use in determining the DRG value of ABF activity undertaken during 2022 only. These prices should not be applied to activity from other years.
2. The RVs and base prices contained in this price list have been generated as a complementary pairing and should only be used in conjunction with each other. It is not valid to take the base prices from one year and apply them the RVs/WU from another year to obtain estimates of activity value.
3. The relative values and prices presented in this document are applicable to the entire episode of care from admission to an inpatient or daycase bed to discharge from hospital. They cannot be used to infer either a cost or price for the treatment of a particular diagnosis, or the provision of a particular intervention or procedure in isolation of the entire episode of care. The HPO does not provide pricing information for individual diagnoses, interventions or procedures.
4. The value of activity derived by applying this price list to the 2022 HIPE activity data does not include ABF co-payments to hospitals for:
  - a. high cost oncology drugs
  - b. tertiary referral hospitals
  - c. specialist paediatric hospitals
  - d. premium associated with agency staff

These co-payments are made at the hospital level and are not broken down to the individual DRG level.

5. In instances where there are insufficient case numbers to derive a reliable price for a particular complexity level within an ADRG, cases are pooled and a common price is set for 2 or more DRGs within the ADRG.
6. A DRG price is quoted if there has been at least 1 case reported on the national HIPE file. In particular, the presence of a daycase price for a DRG where the case numbers are small is not an indication that this activity should be undertaken as a daycase.

# INPATIENTS



DRG	DRG Description	Indicative Inpatient Cases	Inpatient Inlier Price	Same Day RV	One Day RV	Multi Low RV	Inlier RV	Multi High RV	Average Length of Stay	Lequiv (Low Boundary)	Hequiv (High Boundary)
<b>UNRELATED OR DRGS</b>											
801A	OR PR UNREL TO PDX, MAJC	385	€33,625	0.605	0.734	0.258	9.757	0.168	53.0	36	70
801B	OR PR UNREL TO PDX, INTC	443	€16,873	0.607	1.428		3.070	0.143	17.3	2	34
801C	OR PR UNREL TO PDX, MINC	274	€7,141	0.446	1.299		1.299	0.126	6.0	1	23
963Z	NEONATAL DX NOT CONSNT AGE/WGT	< 5	€831	0.069	0.151		0.151	0.137	1.0	1	1
<b>PRE MDC</b>											
A01Z	LIVER TRANSPLANT	40	€70,927	3.361	3.775	0.830	12.905	0.374	29.1	12	46
A03Z	LUNG OR HEART-LUNG TRANSPLANT	16	€102,473	4.589	4.949	0.721	18.644	0.379	37.0	20	54
A05Z	HEART TRANSPLANT	9	€171,225	3.385	3.615	0.459	31.153	0.320	77.8	61	95
A06A	TRACHEOSTMY/VENT>=96HRS, MAJC	186	€218,871	2.768	2.993	0.449	39.822	0.189	100.2	83	117
A06B	TRACHEOSTMY/VENT>=96HRS, INTC	764	€114,993	1.569	1.820	0.503	20.922	0.280	55.6	39	73
A06C	TRACHEOSTMY/VENT>=96HRS, MINC	1,264	€57,215	0.933	1.385	0.903	10.410	0.247	27.6	11	45
A07A	ALLOGENEIC BMT, AGE<=16Y/MAJC	54	€215,162	0.690	1.248	1.115	39.147	0.807	52.3	35	69
A07B	ALLOGENEIC BMT, AGE>=17Y+MINC	47	€130,273	0.592	1.253	1.321	23.702	0.680	35.0	18	52
A08A	AUTOLOGOUS BMT, MAJC	111	€48,229	0.344	0.710	0.733	8.775	0.392	23.6	12	41
A08B	AUTOLOGOUS BMT, MINC	51	€22,192	0.317	4.038		4.038	0.285	8.0	1	25
A09A	KDNY TRANSPLNT, AGE<=16Y/MAJC	15	€54,684	1.588	2.348	1.520	9.949	0.516	17.0	6	34
A09B	KDNY TRANSPLNT, AGE>=17Y+MINC	110	€34,888	1.524	1.962	0.877	6.348	0.437	9.4	6	16
A10Z	INSERTION OF VAD	10	€207,609	7.858	8.123	0.529	37.773	0.323	74.1	57	91
A11A	INS IMPLNT SP INFUS DEV, MAJC	9	€111,180	2.039	2.258	0.438	20.228	0.343	58.7	42	76
A11B	INS IMPLNT SP INFUS DEV, MINC	6	€30,702	1.993	5.586		5.586	0.423	8.5	1	26
A12Z	INS NEUROSTIMULATOR DEV	71	€25,695	3.143	4.675		4.675	0.433	2.7	1	8
A40A	ECMO, MAJC	14	€222,612	8.495	9.003	1.016	40.503	0.485	48.7	32	66
A40B	ECMO, MINC	27	€96,981	3.718	6.504	5.571	17.645	0.524	19.7	3	37
<b>MDC 01 - DISEASES AND DISORDERS OF THE NERVOUS SYSTEM</b>											
B01A	VENTRICULAR SHUNT REV, MAJC	20	€10,958	0.633	1.994		1.994	0.164	14.9	1	32
B01B	VENTRICULAR SHUNT REV, MINC	49	€6,481	0.570	1.179		1.179	0.136	4.3	1	13
B02A	CRANIAL PROCEDURES, MAJC	210	€33,328	1.463	1.611	0.297	6.064	0.157	33.2	16	50
B02B	CRANIAL PROCEDURES, INTC	658	€15,369	1.172	1.714		2.796	0.127	12.0	2	29
B02C	CRANIAL PROCEDURES, MINC	1,296	€10,771	0.720	1.133		1.960	0.133	6.3	2	18
B03A	SPINAL PROCEDURES, MAJC	52	€20,168	1.305	1.643	0.675	3.669	0.182	20.5	4	38
B03B	SPINAL PROCEDURES, INTC	127	€8,811	0.936	1.603		1.603	0.141	4.3	1	16
B03C	SPINAL PROCEDURES, MINC	77	€8,214	0.853	1.494		1.494	0.118	4.2	1	15
B04A	EXTRACRANIAL VASCULAR PR, MAJC	36	€26,159	1.551	1.739	0.378	4.759	0.173	25.6	9	43
B04B	EXTRACRANIAL VASCULAR PR, INTC	111	€16,208	1.314	1.641	0.654	2.949	0.129	9.8	3	27
B04C	EXTRACRANIAL VASCULAR PR, MINC	188	€10,427	1.093	1.361		1.897	0.126	5.3	2	15
B05Z	CARPAL TUNNEL RELEASE	25	€3,026	0.186	0.551		0.551	0.097	1.3	1	3
B06A	CBL PSY,MUS DYSY,NPTHY PR,MAJC	32	€40,153	0.670	0.959	0.577	7.305	0.199	28.9	12	46
B06B	CBL PSY,MUS DYSY,NPTHY PR,INTC	40	€17,863	0.461	3.250		3.250	0.192	15.8	1	33
B06C	CBL PSY,MUS DYSY,NPTHY PR,MINC	79	€6,874	0.408	1.251		1.251	0.146	6.1	1	23
B07A	CRANL/PRPHL NERV&OTH PR, MAJC	34	€22,400	0.508	0.650	0.285	4.075	0.180	30.2	13	47
B07B	CRANL/PRPHL NERV&OTH PR, MINC	326	€3,904	0.415	0.710		0.710	0.121	1.5	1	5

DRG	DRG Description	Indicative Inpatient Cases	Inpatient Inlier Price	Same Day RV	One Day RV	Multi Low RV	Inlier RV	Multi High RV	Average Length of Stay	Lequiv (Low Boundary)	Hequiv (High Boundary)
B40Z	PLASMAPHERESIS + NEURO DIS, SD	< 5	€567	0.103					0.5	0.5	0.5
B41Z	TELEMETRIC EEG MONITORING	168	€6,184	0.059	0.415		1.125	0.117	6.7	2	17
B42A	NERV SYS DIS +VENT SUPP, MAJC	72	€36,612	0.159	0.501	0.684	6.661	0.154	27.2	10	44
B42B	NERV SYS DIS +VENT SUPP, MINC	132	€13,198	0.157	2.401		2.401	0.143	5.8	1	20
B60A	ACUTE PARA/QUAD+/-OR PR, MAJC	32	€76,750	1.377	1.549	0.345	13.964	0.188	54.0	37	71
B60B	ACUTE PARA/QUAD+/-OR PR, MINC	90	€19,511	0.722	3.550		3.550	0.171	14.7	1	32
B61A	SPINAL CORD COND+/-OR PR, MAJC	74	€33,469	0.703	0.919	0.431	6.089	0.173	29.8	13	47
B61B	SPINAL CORD COND+/-OR PR, MINC	111	€11,987	0.406	2.181		2.181	0.170	8.5	1	25
B62Z	APHERESIS	6	€1,849	0.181	0.336		0.336	0.144	1.4	1	4
B63A	DMNTIA&CHRNIC DIST CBL FN,MAJC	793	€20,093	0.041	0.102	0.123	3.656	0.068	47.3	30	64
B63B	DMNTIA&CHRNIC DIST CBL FN,MINC	676	€5,523	0.025	1.005		1.005	0.052	17.4	1	34
B64A	DELIRIUM, MAJC	1,029	€6,673	0.047	1.214		1.214	0.076	16.1	1	33
B64B	DELIRIUM, MINC	1,078	€2,752	0.047	0.501		0.501	0.072	5.3	1	20
B65A	CEREBRAL PALSY, MAJC	25	€7,867	0.137	1.431		1.431	0.239	7.6	1	25
B65B	CEREBRAL PALSY, MINC	10	€2,621	0.093	0.477		0.477	0.111	3.8	1	14
B66A	NERVOUS SYSTEM NEOPLASM, MAJC	527	€10,794	0.096	1.964		1.964	0.118	16.8	1	34
B66B	NERVOUS SYSTEM NEOPLASM, MINC	773	€6,054	0.061	1.101		1.101	0.124	6.6	1	24
B67A	DEGNRTV NERV SYS DIS, MAJC	849	€12,857	0.171	0.315	0.289	2.339	0.113	25.3	8	42
B67B	DEGNRTV NERV SYS DIS, INTC	628	€6,071	0.168	1.105		1.105	0.096	7.1	1	24
B67C	DEGNRTV NERV SYS DIS, MINC	112	€6,071	0.167	1.105		1.105	0.122	3.4	1	14
B68A	MLT SCLROSIS&CBL ATAXIA, MAJC	334	€9,589	0.301	1.745		1.745	0.134	11.1	1	28
B68B	MLT SCLROSIS&CBL ATAXIA, MINC	485	€5,634	0.296	1.025		1.025	0.138	4.6	1	21
B69A	TIA & PRECEREBRL OCCLUSN, MAJC	760	€4,224	0.060	0.769		0.769	0.081	7.6	1	25
B69B	TIA & PRECEREBRL OCCLUSN, MINC	2,028	€2,377	0.060	0.432		0.432	0.085	3.8	1	12
B70A	STROKE & OTH CEREB DIS, MAJC	783	€30,286	0.089	0.191	0.205	5.510	0.115	43.5	27	61
B70B	STROKE & OTH CEREB DIS, INTC	2,099	€9,258	0.085	0.618		1.685	0.103	15.7	2	33
B70C	STROKE & OTH CEREB DIS, MINC	3,278	€5,435	0.085	0.989		0.989	0.104	7.9	1	25
B70D	STROKE & OTH CEREB DIS, TR<5D	329	€2,154	0.084	0.392		0.392	0.067	2.0	1	5
B71A	CRANIAL&PERIPHL NERV DIS, MAJC	1,317	€7,091	0.099	1.290		1.290	0.128	7.3	1	24
B71B	CRANIAL&PERIPHL NERV DIS, MINC	406	€7,091	0.097	1.290		1.290	0.146	4.9	1	17
B72A	NRVS SYS INF EX VRL MNGTS,MAJC	197	€20,574	0.142	0.656	1.029	3.743	0.205	21.0	4	38
B72B	NRVS SYS INF EX VRL MNGTS,MINC	190	€9,567	0.092	1.741		1.741	0.173	8.7	1	26
B73Z	VIRAL MENINGITIS	151	€4,486	0.080	0.816		0.816	0.151	4.7	1	17
B74A	NONTRAUMATIC STUPOR&COMA, MAJC	40	€5,060	0.058	0.921		0.921	0.102	8.5	1	26
B74B	NONTRAUMATIC STUPOR&COMA, MINC	118	€2,528	0.058	0.460		0.460	0.115	2.3	1	8
B75Z	FEBRILE CONVULSIONS	269	€2,750	0.140	0.500		0.500	0.276	1.7	1	5
B76A	SEIZURES, MAJC	1,990	€5,991	0.084	1.090		1.090	0.127	7.8	1	25
B76B	SEIZURES, MINC	4,709	€2,719	0.059	0.495		0.495	0.137	2.9	1	9
B77A	HEADACHES, MAJC	1,873	€2,994	0.069	0.545		0.545	0.107	4.6	1	17
B77B	HEADACHES, MINC	7,627	€1,782	0.060	0.324		0.324	0.103	2.5	1	8
B78A	INTRACRANIAL INJURIES, MAJC	348	€15,550	0.076	0.221	0.290	2.829	0.120	27.3	10	44
B78B	INTRACRANIAL INJURIES, MINC	763	€3,805	0.057	0.692		0.692	0.093	6.1	1	23

DRG	DRG Description	Indicative Inpatient Cases	Inpatient Inlier Price	Same Day RV	One Day RV	Multi Low RV	Inlier RV	Multi High RV	Average Length of Stay	Lequiv (Low Boundary)	Lequiv (High Boundary)
B78C	INTRACRANIAL INJURIES, TR<5D	80	€2,484	0.050	0.452		0.452	0.092	1.6	1	6
B79A	SKULL FRACTURES, MAJC	128	€5,114	0.075	0.931		0.931	0.109	7.7	1	25
B79B	SKULL FRACTURES, MINC	168	€1,831	0.075	0.333		0.333	0.152	2.0	1	6
B80A	OTHER HEAD INJURIES, MAJC	426	€4,256	0.122	0.774		0.774	0.100	8.6	1	26
B80B	OTHER HEAD INJURIES, MINC	2,158	€688	0.086	0.125		0.125	0.061	0.9	0	2
B81A	OTHER DIS OF NERVOUS SYS, MAJC	959	€7,421	0.060	1.350		1.350	0.083	18.2	1	35
B81B	OTHER DIS OF NERVOUS SYS, MINC	4,004	€3,256	0.061	0.592		0.592	0.082	5.3	1	21
B82A	CHR&UNSP PARA/QUAD+/-PR, MAJC	92	€55,300	0.428	0.522	0.187	10.061	0.164	69.3	52	86
B82B	CHR&UNSP PARA/QUAD+/-PR, INTC	155	€10,943	0.216	0.808		1.991	0.165	16.0	2	33
B82C	CHR&UNSP PARA/QUAD+/-PR, MINC	142	€6,102	0.140	1.110		1.110	0.168	6.2	1	23
<b>MDC 02 - DISEASES AND DISORDERS OF THE EYE</b>											
C01A	PR FOR PENETRRTNG EYE INJ, MAJC	34	€16,974	0.883	3.088		3.088	0.413	5.2	1	18
C01B	PR FOR PENETRRTNG EYE INJ, MINC	51	€10,878	0.630	1.979		1.979	0.422	2.8	1	10
C02Z	ENUCLEATIONS & ORBITAL PROCS	71	€10,067	0.510	1.832		1.832	0.317	3.0	1	10
C03A	RETINAL PROCEDURES, MAJC	956	€3,580	0.113	0.651		0.651	0.089	2.7	1	8
C03B	RETINAL PROCEDURES, MINC	190	€2,884	0.138	0.525		0.525	0.117	1.9	1	6
C04A	MJR CORN,SCLERL&CNJNCT PR,MAJC	41	€12,593	0.696	2.291		2.291	0.325	4.0	1	14
C04B	MJR CORN,SCLERL&CNJNCT PR,MINC	90	€5,788	0.473	1.053		1.053	0.300	1.7	1	4
C05Z	DACRYOCYSTORHINOSTOMY	52	€4,352	0.466	0.792		0.792	0.111	1.0	1	1
C10Z	STRABISMUS PROCEDURES	42	€3,652	0.364	0.665		0.665	0.259	1.0	1	1
C11Z	EYELID PROCEDURES	55	€4,268	0.275	0.777		0.777	0.143	1.1	1	3
C12Z	OTHER CORN, SCLERAL&CONJNCT PR	67	€7,383	0.253	1.343		1.343	0.172	3.7	1	15
C13Z	LACRIMAL PROCEDURES	6	€2,491	0.131	0.453		0.453	0.044	2.1	1	7
C14A	OTHER EYE PROCEDURES, MAJC	57	€5,982	0.180	1.088		1.088	0.153	4.6	1	22
C14B	OTHER EYE PROCEDURES, MINC	47	€4,152	0.163	0.755		0.755	0.210	1.3	1	4
C15Z	GLAUCOMA/CMLPX CATARACT PROCS	201	€6,077	0.205	1.106		1.106	0.193	1.8	1	5
C16Z	LENS PROCEDURES	111	€3,961	0.193	0.721		0.721	0.220	1.3	1	3
C60A	AC & MJR EYE INFECTIONS, MAJC	49	€16,279	0.133	1.076		2.962	0.168	10.3	2	27
C60B	AC & MJR EYE INFECTIONS, MINC	153	€7,647	0.132	1.391		1.391	0.281	5.0	1	19
C61A	NEURO & VASCLR DIS EYE, MAJC	461	€4,665	0.096	0.849		0.849	0.124	5.8	1	22
C61B	NEURO & VASCLR DIS EYE, MINC	550	€3,584	0.089	0.652		0.652	0.148	3.9	1	13
C62A	HYPH & MED M TRAUMA EYE, MAJC	164	€6,120	0.070	1.113		1.113	0.118	8.7	1	26
C62B	HYPH & MED M TRAUMA EYE, MINC	297	€3,160	0.064	0.575		0.575	0.183	2.5	1	7
C63A	OTH DIS OF THE EYE, MAJC	169	€5,316	0.069	0.967		0.967	0.106	4.9	1	22
C63B	OTH DIS OF THE EYE, INTC	917	€2,796	0.069	0.509		0.509	0.151	3.0	1	9
C63C	OTH DIS OF THE EYE, MINC	133	€1,743	0.034	0.317		0.317	0.087	1.4	1	5



DRG	DRG Description	Indicative Inpatient Cases	Inpatient Inlier Price	Same Day RV	One Day RV	Multi Low RV	Inlier RV	Multi High RV	Average Length of Stay	Lequiv (Low Boundary)	Hequiv (High Boundary)
<b>MDC 03 - DISEASES AND DISORDERS OF THE EAR, NOSE, MOUTH AND THROAT</b>											
D01Z	COCHLEAR IMPLANT	82	€46,037	7.643	8.376		8.376	0.109	2.1	1	6
D02A	HEAD & NECK PROCEDURES, MAJC	62	€29,779	1.959	2.453	0.988	5.418	0.217	20.5	4	38
D02B	HEAD & NECK PROCEDURES, INTC	41	€14,608	1.281	2.658		2.658	0.182	9.0	1	26
D02C	HEAD & NECK PROCEDURES, MINC	70	€7,482	0.779	1.361		1.361	0.207	3.2	1	10
D03Z	SURGICAL REPR CLEFT LIP/PALATE	116	€9,952	1.005	1.811		1.811	0.478	2.5	1	6
D04A	MAXILLO SURGERY, MAJC	246	€6,893	0.810	1.254		1.254	0.266	2.8	1	7
D04B	MAXILLO SURGERY, MINC	188	€4,428	0.499	0.806		0.806	0.202	2.4	1	7
D05Z	PAROTID GLAND PROCEDURES	126	€8,466	1.143	1.540		1.540	0.176	2.3	1	7
D06Z	SINUS & COMPLEX MIDDLE EAR PR	508	€5,488	0.667	0.999		0.999	0.133	1.4	1	3
D10Z	NASAL PROCEDURES	307	€4,929	0.517	0.897		0.897	0.180	1.2	1	2
D11Z	TONSILLECTOMY, ADENOIDECTOMY	1,881	€3,761	0.292	0.684		0.684	0.135	1.2	1	2
D12A	OTH EAR,NOSE,MTH&THRT PR, MAJC	96	€8,081	0.464	1.470		1.470	0.154	7.2	1	24
D12B	OTH EAR,NOSE,MTH&THRT PR, MINC	293	€4,027	0.401	0.733		0.733	0.159	1.8	1	5
D13Z	MYRINGOTOMY + TUBE INSERTION	44	€2,661	0.197	0.484		0.484	0.093	1.5	1	5
D14A	MOUTH&SALIVRY GLAND PR, MAJC	188	€5,002	0.351	0.910		0.910	0.188	3.6	1	13
D14B	MOUTH&SALIVRY GLAND PR, MINC	50	€3,444	0.174	0.627		0.627	0.155	1.7	1	5
D15Z	MASTOID PROCEDURES	188	€8,910	1.206	1.621		1.621	0.155	1.6	1	4
D40Z	DENTAL EXTRACT & RESTORATIONS	248	€3,433	0.224	0.625		0.625	0.128	1.6	1	5
D60A	EAR,NOSE,MTH&THRT MALIG, MAJC	260	€15,055	0.239	1.072		2.739	0.137	19.0	2	36
D60B	EAR,NOSE,MTH&THRT MALIG, MINC	286	€5,651	0.099	1.028		1.028	0.133	5.7	1	23
D61A	DYSEQUILIBRIUM, MAJC	836	€2,974	0.067	0.541		0.541	0.081	5.4	1	21
D61B	DYSEQUILIBRIUM, MINC	4,214	€1,878	0.060	0.342		0.342	0.083	3.0	1	10
D62A	EPISTAXIS, MAJC	119	€6,251	0.082	1.137		1.137	0.107	7.6	1	25
D62B	EPISTAXIS, MINC	700	€2,301	0.057	0.419		0.419	0.120	2.5	1	7
D63A	OTITIS MEDIA&UPP RESP INF,MAJC	2,129	€4,302	0.065	0.783		0.783	0.182	4.3	1	15
D63B	OTITIS MEDIA&UPP RESP INF,MINC	3,751	€2,131	0.059	0.388		0.388	0.150	1.8	1	4
D64A	LARYNGOTRTIS&EPIGLOTTITIS,MAJC	30	€3,866	0.219	0.703		0.703	0.345	2.1	1	7
D64B	LARYNGOTRTIS&EPIGLOTTITIS,MINC	196	€1,650	0.206	0.300		0.300	0.191	1.0	0	2
D65A	NASAL TRAUMA & DEFORMITY, MAJC	137	€4,258	0.106	0.775		0.775	0.081	6.9	1	24
D65B	NASAL TRAUMA & DEFORMITY, MINC	252	€1,894	0.103	0.345		0.345	0.077	1.8	1	4
D66A	OTH EAR,NOSE,MTH&THRT DIS,MAJC	389	€2,996	0.094	0.545		0.545	0.100	4.2	1	18
D66B	OTH EAR,NOSE,MTH&THRT DIS,MINC	1,084	€1,047	0.093	0.191		0.191	0.097	1.4	1	4
D67A	ORAL & DENTAL DISORDERS, MAJC	332	€5,463	0.106	0.994		0.994	0.154	4.4	1	19
D67B	ORAL & DENTAL DISORDERS, MINC	790	€2,235	0.095	0.407		0.407	0.133	2.3	1	7
<b>MDC 04 - DISEASES AND DISORDERS OF THE RESPIRATORY SYSTEM</b>											
E01A	MAJOR CHEST PROCEDURES, MAJC	60	€32,568	1.512	1.675	0.327	5.925	0.166	31.0	14	48
E01B	MAJOR CHEST PROCEDURES, INTC	250	€18,432	1.231	1.534	0.607	3.354	0.133	13.5	4	30
E01C	MAJOR CHEST PROCEDURES, MINC	486	€13,270	0.980	1.267	0.574	2.414	0.144	8.0	3	22
E02A	OTHER RESPIRATORY SYS PR, MAJC	198	€20,823	0.501	0.753	0.506	3.789	0.173	23.6	7	41

DRG	DRG Description	Indicative Inpatient Cases	Inpatient Inlier Price	Same Day RV	One Day RV	Multi Low RV	Inlier RV	Multi High RV	Average Length of Stay	Lequiv (Low Boundary)	Lequiv (High Boundary)
E02B	OTHER RESPIRATORY SYS PR, INTC	201	€9,521	0.315	1.732		1.732	0.144	6.9	1	24
E02C	OTHER RESPIRATORY SYS PR, MINC	54	€3,597	0.191	0.654		0.654	0.162	1.5	1	3
E40A	RESP SYS DIS, VENT SUPP, MAJC	100	€31,367	0.167	0.670	1.007	5.707	0.137	22.7	6	40
E40B	RESP SYS DIS, VENT SUPP, MINC	152	€18,489	0.137	1.213		3.364	0.169	11.5	2	28
E41A	RESP SYS DIS, NON-INV VENT, MAJC	647	€20,271	0.100	0.426	0.652	3.688	0.135	23.3	6	40
E41B	RESP SYS DIS, NON-INV VENT, MINC	1,549	€9,545	0.067	0.401	0.668	1.737	0.110	12.0	3	29
E42A	BRONCHOSCOPY, MAJC	762	€12,108	0.139	0.552	0.826	2.203	0.142	16.5	3	34
E42B	BRONCHOSCOPY, MINC	414	€4,986	0.129	0.907		0.907	0.102	5.9	1	23
E60A	CYSTIC FIBROSIS, MAJC	376	€14,954	0.101	0.625	1.048	2.721	0.187	13.6	3	31
E60B	CYSTIC FIBROSIS, MINC	184	€11,425	0.097	2.079		2.079	0.195	8.6	1	26
E61A	PULMONARY EMBOLISM, MAJC	763	€5,835	0.070	0.401		1.062	0.098	10.1	2	27
E61B	PULMONARY EMBOLISM, MINC	967	€2,933	0.066	0.534		0.534	0.105	4.2	1	18
E62A	RESPIR INFECTN/INFLAMM, MAJC	9,031	€8,046	0.075	0.538		1.464	0.105	13.2	2	30
E62B	RESPIR INFECTN/INFLAMM, MINC	4,060	€3,579	0.061	0.651		0.651	0.097	5.5	1	19
E63A	SLEEP APNOEA, MAJC	284	€1,509	0.078	0.275		0.275	0.143	1.5	1	3
E63B	SLEEP APNOEA, MINC	560	€775	0.078	0.141		0.141	0.155	1.0	1	1
E64A	PULM OEDEMA & RESP FAIL, MAJC	224	€9,701	0.071	0.635		1.765	0.102	12.6	2	30
E64B	PULM OEDEMA & RESP FAIL, MINC	225	€4,520	0.064	0.822		0.822	0.097	5.6	1	23
E65A	CHRONIC OBSTR AIRWAY DIS, MAJC	4,376	€5,776	0.057	0.389		1.051	0.093	10.9	2	28
E65B	CHRONIC OBSTR AIRWAY DIS, MINC	6,041	€2,902	0.054	0.528		0.528	0.085	5.2	1	17
E66A	MAJOR CHEST TRAUMA, MAJC	267	€7,439	0.089	1.353		1.353	0.093	12.4	1	29
E66B	MAJOR CHEST TRAUMA, MINC	348	€2,371	0.053	0.431		0.431	0.097	3.6	1	15
E67A	RESP SIGNS & SYMPTOMS, MAJC	3,594	€3,972	0.074	0.723		0.723	0.135	4.8	1	18
E67B	RESP SIGNS & SYMPTOMS, MINC	3,925	€2,007	0.059	0.365		0.365	0.123	2.0	1	5
E68A	PNEUMOTHORAX, MAJC	341	€5,974	0.073	0.411		1.087	0.112	8.9	2	26
E68B	PNEUMOTHORAX, MINC	383	€2,790	0.062	0.508		0.508	0.111	3.4	1	13
E69A	BRONCHITIS & ASTHMA, MAJC	552	€4,949	0.080	0.900		0.900	0.144	6.3	1	23
E69B	BRONCHITIS & ASTHMA, MINC	2,216	€2,663	0.067	0.485		0.485	0.129	2.7	1	8
E70A	WHOOPNG CGH&ACTE BRNCHIO, MAJC	140	€7,924	0.185	1.442		1.442	0.334	4.1	1	15
E70B	WHOOPNG CGH&ACTE BRNCHIO, MINC	684	€4,713	0.084	0.857		0.857	0.291	2.8	1	8
E71A	RESPIRATORY NEOPLASMS, MAJC	933	€9,246	0.105	0.631		1.682	0.120	14.0	2	31
E71B	RESPIRATORY NEOPLASMS, MINC	1,032	€4,742	0.098	0.863		0.863	0.128	6.0	1	23
E72Z	RESP PROBS FROM NEONATL PERIOD	55	€10,645	0.223	1.937		1.937	0.440	5.5	1	22
E73A	PLEURAL EFFUSION, MAJC	180	€10,508	0.079	0.446	0.733	1.912	0.115	17.9	3	35
E73B	PLEURAL EFFUSION, INTC	427	€5,595	0.072	1.018		1.018	0.109	8.3	1	25
E73C	PLEURAL EFFUSION, MINC	235	€4,081	0.069	0.742		0.742	0.119	4.1	1	21
E74A	INTERSTITIAL LUNG DIS, MAJC	487	€6,911	0.157	1.257		1.257	0.110	10.8	1	28
E74B	INTERSTITIAL LUNG DIS, MINC	291	€3,979	0.156	0.724		0.724	0.137	5.7	1	23
E75A	OTHER RESP SYS DIS, MAJC	6,687	€4,863	0.056	0.885		0.885	0.083	8.7	1	26

DRG	DRG Description	Indicative Inpatient Cases	Inpatient Inlier Price	Same Day RV	One Day RV	Multi Low RV	Inlier RV	Multi High RV	Average Length of Stay	Lequiv (Low Boundary)	Hequiv (High Boundary)
E75B	OTHER RESP SYS DIS, MINC	3,481	€2,183	0.047	0.397		0.397	0.097	3.4	1	11
E76A	RESPIRATORY TUBERCULOSIS, MAJC	37	€11,876	0.069	0.192	0.246	2.161	0.149	26.4	9	43
E76B	RESPIRATORY TUBERCULOSIS, MINC	33	€5,555	0.049	1.011		1.011	0.095	9.4	1	26
<b>MCD 05 - DISEASES AND DISORDERS OF THE CIRCULATORY SYSTEM</b>											
F01A	IMPL/REPL AICD, TOT SYS, MAJC	58	€44,530	3.673	4.165	0.984	8.102	0.236	18.7	5	36
F01B	IMPL/REPL AICD, TOT SYS, MINC	199	€22,885	2.781	4.164		4.164	0.209	3.9	1	16
F02Z	OTHER AICD PROCEDURES	24	€11,432	0.850	2.080		2.080	0.191	4.0	1	16
F03A	CRD VLV PR+PMP+INV INVES, MAJC	38	€46,021	3.286	3.507	0.442	8.373	0.155	29.2	12	46
F03B	CRD VLV PR+PMP+INV INVES, MINC	54	€37,021	3.286	6.736		6.736	0.129	17.5	1	35
F04A	CRD VLV PR+PMP-INV INVES, MAJC	39	€55,753	2.383	2.752	0.739	10.144	0.173	27.5	11	45
F04B	CRD VLV PR+PMP-INV INVES, INTC	199	€35,383	2.299	2.890	1.183	6.438	0.183	14.2	4	31
F04C	CRD VLV PR+PMP-INV INVES, MINC	304	€25,807	2.117	2.976		4.695	0.135	9.2	2	26
F05A	CRNRY BYPASS+INV INVES, MAJC	36	€43,465	2.263	2.489	0.452	7.908	0.174	29.8	13	47
F05B	CRNRY BYPASS+INV INVES, MINC	128	€31,447	2.061	2.276	0.431	5.721	0.107	20.3	9	37
F06A	CRNRY BYPASS-INV INVES, MAJC	49	€35,674	2.010	2.355	0.689	6.491	0.161	23.7	7	41
F06B	CRNRY BYPASS-INV INVES, MINC	405	€22,991	1.818	2.081	0.526	4.183	0.159	10.7	5	21
F07A	OTH CARDTHOR/VASC PR+PMP, MAJC	24	€56,068	2.734	3.563	1.659	10.201	0.333	16.9	5	34
F07B	OTH CARDTHOR/VASC PR+PMP, INTC	60	€41,976	2.349	3.104	1.511	7.637	0.293	9.5	4	22
F07C	OTH CARDTHOR/VASC PR+PMP, MINC	92	€29,322	2.096	2.559	0.925	5.335	0.216	9.7	4	22
F08A	MJR RECNSTR VASC PR-PUMP, MAJC	73	€54,631	3.026	3.195	0.337	9.940	0.173	38.1	21	55
F08B	MJR RECNSTR VASC PR-PUMP, INTC	309	€24,780	2.229	2.684	0.912	4.508	0.158	14.2	3	31
F08C	MJR RECNSTR VASC PR-PUMP, MINC	272	€16,903	1.800	2.225		3.075	0.186	7.9	2	25
F09A	OTH CARDIOTHR PR-CPB PMP, MAJC	22	€35,513	1.403	3.089		6.461	0.299	14.0	2	31
F09B	OTH CARDIOTHR PR-CPB PMP, INTC	49	€18,779	0.851	3.417		3.417	0.149	12.9	1	30
F09C	OTH CARDIOTHR PR-CPB PMP, MINC	63	€10,857	0.774	1.975		1.975	0.233	3.9	1	16
F10A	INTERVENT CRNRY PR + AMI, MAJC	233	€15,701	0.639	1.378		2.857	0.160	13.2	2	30
F10B	INTERVENT CRNRY PR + AMI, MINC	1,619	€7,557	0.526	0.809		1.375	0.206	4.2	2	11
F11A	AMP CIRC DIS-UP LMB&TOE, MAJC	68	€89,051	2.526	2.638	0.222	16.202	0.161	79.5	62	96
F11B	AMP CIRC DIS-UP LMB&TOE, MINC	116	€37,047	1.363	1.494	0.262	6.740	0.184	37.6	21	55
F12A	IMPL/REPL PM, TOT SYS, MAJC	257	€16,458	1.146	1.762		2.994	0.190	13.3	2	30
F12B	IMPL/REPL PM, TOT SYS, MINC	529	€8,908	0.837	1.621		1.621	0.140	4.1	1	16
F13A	AMP CIRC DIS,UPP LMB&TOE, MAJC	35	€20,277	0.750	1.017	0.534	3.689	0.129	22.9	6	40
F13B	AMP CIRC DIS,UPP LMB&TOE, MINC	76	€10,627	0.623	1.060		1.934	0.155	10.4	2	27
F14A	VASC PR-MJR RECONSTR-PMP, MAJC	167	€23,286	0.937	4.237		4.237	0.174	18.4	1	35
F14B	VASC PR-MJR RECONSTR-PMP, INTC	324	€11,000	0.706	2.001		2.001	0.156	8.2	1	25
F14C	VASC PR-MJR RECONSTR-PMP, MINC	303	€6,972	0.456	1.268		1.268	0.179	4.3	1	17
F15A	INTERV CRNRY PR-AMI+STNT, MAJC	342	€11,942	0.596	2.173		2.173	0.198	9.2	1	26
F15B	INTERV CRNRY PR-AMI+STNT, MINC	1,411	€5,793	0.577	1.054		1.054	0.183	2.1	1	6
F16A	INTERV CRNRY PR-AMI-STNT, MAJC	25	€9,029	0.471	1.643		1.643	0.111	10.9	1	28
F16B	INTERV CRNRY PR-AMI-STNT, MINC	104	€5,056	0.466	0.920		0.920	0.158	2.2	1	7
F17A	INSERT/REPLACE PACEM GEN, MAJC	29	€13,740	0.987	2.500		2.500	0.152	9.8	1	27
F17B	INSERT/REPLACE PACEM GEN, MINC	37	€4,579	0.492	0.833		0.833	0.098	1.5	1	5

DRG	DRG Description	Indicative Inpatient Cases	Inpatient Inlier Price	Same Day RV	One Day RV	Multi Low RV	Inlier RV	Multi High RV	Average Length of Stay	Lequiv (Low Boundary)	Hequiv (High Boundary)
F18A	OTHER PACEMAKER PR, MAJC	31	€14,573	0.949	1.289	0.681	2.651	0.163	19.7	3	37
F18B	OTHER PACEMAKER PR, MINC	35	€5,732	0.491	1.043		1.043	0.227	4.9	1	22
F19A	TRNS-VSCLR PERC CRDC INT, MAJC	60	€19,944	0.972	3.629		3.629	0.247	7.2	1	24
F19B	TRNS-VSCLR PERC CRDC INT, MINC	75	€6,508	0.950	1.184		1.184	0.128	1.3	1	2
F20Z	VEIN LIGATION & STRIPPING	119	€4,926	0.302	0.896		0.896	0.191	1.4	1	3
F21A	OTH CIRCULATORY SYS PR, MAJC	35	€37,409	0.740	0.881	0.282	6.806	0.187	39.1	22	56
F21B	OTH CIRCULATORY SYS PR, INTC	40	€11,226	0.474	2.043		2.043	0.153	9.2	1	26
F21C	OTH CIRCULATORY SYS PR, MINC	24	€6,371	0.407	1.159		1.159	0.164	4.2	1	18
F40A	CIRC DIS +VENT SUPP, MAJC	49	€23,939	0.176	1.569		4.355	0.202	19.2	2	36
F40B	CIRC DIS +VENT SUPP, MINC	54	€12,657	0.171	2.303		2.303	0.190	5.7	1	20
F41A	CRC DSRD+AMI+INVA INV PR, MAJC	126	€10,044	0.242	0.770		1.827	0.181	12.6	2	30
F41B	CRC DSRD+AMI+INVA INV PR, MINC	568	€5,581	0.228	1.015		1.015	0.164	4.3	1	12
F42A	CIRC DIS-AMI+INVA INV PR, MAJC	1,011	€8,711	0.274	1.585		1.585	0.166	8.2	1	25
F42B	CIRC DIS-AMI+INVA INV PR, MINC	2,533	€4,249	0.169	0.773		0.773	0.158	3.1	1	10
F43A	CIRC DIS +N-INVAS VENT, MAJC	90	€22,086	0.097	0.268	0.341	4.018	0.122	28.6	12	46
F43B	CIRC DIS +N-INVAS VENT, MINC	137	€10,763	0.083	0.458	0.750	1.958	0.111	14.2	3	31
F60A	CIRC DIS+AMI-INVA INV PR	2,559	€6,291	0.076	1.145		1.145	0.111	7.4	1	24
F60B	CIRC DIS+AMI-INVA INV PR,T<5D	505	€2,005	0.075	0.365		0.365	0.159	1.8	1	6
F61A	INFECTIVE ENDOCARDITIS, MAJC	79	€35,248	0.130	0.283	0.306	6.413	0.152	38.5	21	55
F61B	INFECTIVE ENDOCARDITIS, MINC	54	€11,857	0.115	0.796		2.157	0.126	18.2	2	35
F62A	HEART FAILURE & SHOCK, MAJC	2,414	€9,097	0.066	0.383	0.636	1.655	0.095	15.9	3	33
F62B	HEART FAILURE & SHOCK, MINC	3,567	€4,149	0.065	0.295		0.755	0.094	6.7	2	23
F62C	HEART FAILURE & SHOCK, TR<5D	127	€1,929	0.065	0.351		0.351	0.143	1.8	1	6
F63A	VENOUS THROMBOSIS, MAJC	510	€4,862	0.058	0.885		0.885	0.090	8.3	1	25
F63B	VENOUS THROMBOSIS, MINC	1,464	€2,256	0.052	0.410		0.410	0.086	3.6	1	12
F64A	SKN ULCERS IN CIRC DIS, MAJC	134	€9,970	0.082	0.274	0.385	1.814	0.116	22.1	5	39
F64B	SKN ULCERS IN CIRC DIS, INTC	203	€5,843	0.075	1.063		1.063	0.104	9.2	1	26
F64C	SKN ULCERS IN CIRC DIS, MINC	67	€4,267	0.060	0.776		0.776	0.099	5.9	1	23
F65A	PERIPHERAL VASCULAR DIS, MAJC	457	€7,021	0.086	1.277		1.277	0.097	11.5	1	29
F65B	PERIPHERAL VASCULAR DIS, MINC	747	€3,758	0.071	0.684		0.684	0.108	4.9	1	19
F66A	CORONARY ATHEROSCLEROSIS, MAJC	311	€5,083	0.085	0.925		0.925	0.121	7.6	1	25
F66B	CORONARY ATHEROSCLEROSIS, MINC	1,890	€2,200	0.053	0.400		0.400	0.099	3.7	1	14
F67A	HYPERTENSION, MAJC	365	€4,299	0.068	0.782		0.782	0.121	6.6	1	24
F67B	HYPERTENSION, MINC	2,120	€1,908	0.053	0.347		0.347	0.095	2.7	1	8
F68A	CONGENITAL HEART DISEASE, MAJC	82	€8,034	0.113	1.462		1.462	0.240	3.9	1	18
F68B	CONGENITAL HEART DISEASE, MINC	63	€2,289	0.099	0.416		0.416	0.187	1.6	1	5
F69A	VALVULAR DISORDERS, MAJC	326	€5,984	0.099	1.089		1.089	0.112	9.4	1	26
F69B	VALVULAR DISORDERS, MINC	3,543	€1,824	0.053	0.332		0.332	0.105	2.8	1	9
F72A	UNSTABLE ANGINA, MAJC	155	€4,778	0.065	0.869		0.869	0.096	7.6	1	25
F72B	UNSTABLE ANGINA, MINC	917	€2,463	0.057	0.448		0.448	0.096	4.3	1	16
F73A	SYNCOPE & COLLAPSE, MAJC	2,575	€4,907	0.092	0.893		0.893	0.082	10.7	1	28
F73B	SYNCOPE & COLLAPSE, MINC	7,030	€2,054	0.067	0.374		0.374	0.087	3.4	1	11

DRG	DRG Description	Indicative Inpatient Cases	Inpatient Inlier Price	Same Day RV	One Day RV	Multi Low RV	Inlier RV	Multi High RV	Average Length of Stay	Lequiv (Low Boundary)	Hequiv (High Boundary)
F74A	CHEST PAIN, MAJC	2,628	€2,223	0.061	0.404		0.404	0.094	4.0	1	14
F74B	CHEST PAIN, MINC	14,509	€1,281	0.055	0.233		0.233	0.082	2.2	1	6
F75A	OTHER CIRCULATORY DIS, MAJC	342	€13,974	0.130	0.934		2.543	0.132	16.6	2	34
F75B	OTHER CIRCULATORY DIS, INTC	539	€6,271	0.111	1.141		1.141	0.150	7.8	1	25
F75C	OTHER CIRCULATORY DIS, MINC	1,586	€3,742	0.073	0.681		0.681	0.130	4.4	1	16
F76A	ARRHY,CARD ARRST&COND DIS,MAJC	2,164	€4,442	0.075	0.808		0.808	0.099	7.4	1	24
F76B	ARRHY,CARD ARRST&COND DIS,MINC	5,499	€2,081	0.055	0.379		0.379	0.101	3.2	1	10
<b>MDC 06 - DISEASES AND DISORDERS OF THE DIGESTIVE SYSTEM</b>											
G01A	RECTAL RESECTION, MAJC	69	€58,842	2.433	2.560	0.255	10.706	0.160	50.0	33	67
G01B	RECTAL RESECTION, INTC	185	€27,946	2.211	2.432	0.442	5.085	0.163	22.4	7	39
G01C	RECTAL RESECTION, MINC	612	€16,922	1.814	1.994	0.361	3.079	0.133	10.9	4	26
G02A	MJR SMALL&LARGE BOWEL PR, MAJC	242	€51,055	1.767	1.899	0.264	9.289	0.187	45.8	29	63
G02B	MJR SMALL&LARGE BOWEL PR, INTC	707	€23,221	1.457	1.765	0.615	4.225	0.160	18.9	5	36
G02C	MJR SMALL&LARGE BOWEL PR, MINC	1,312	€13,386	1.167	1.421	0.507	2.435	0.126	10.1	3	27
G03A	STOMCH,OESHPGL&DUODNL PR, MAJC	151	€32,129	1.832	2.196	0.730	5.846	0.139	22.8	6	40
G03B	STOMCH,OESHPGL&DUODNL PR, INTC	199	€20,289	1.540	1.970	0.861	3.691	0.153	12.7	3	30
G03C	STOMCH,OESHPGL&DUODNL PR, MINC	216	€9,152	0.933	1.665		1.665	0.146	5.7	1	21
G04A	PERITONEAL ADHESOLYSIS, MAJC	68	€25,498	1.131	1.365	0.468	4.639	0.152	25.4	8	42
G04B	PERITONEAL ADHESOLYSIS, INTC	261	€13,406	1.036	1.316	0.561	2.439	0.154	10.8	3	28
G04C	PERITONEAL ADHESOLYSIS, MINC	484	€7,445	0.807	1.355		1.355	0.137	4.4	1	16
G05A	MNR SMALL&LARGE BOWEL PR, MAJC	62	€15,520	0.948	1.216	0.536	2.824	0.147	16.3	4	33
G05B	MNR SMALL&LARGE BOWEL PR, MINC	238	€8,251	0.818	0.955	0.273	1.501	0.139	6.8	3	15
G06Z	PYLOROMYOTOMY	51	€8,900	0.477	0.858		1.619	0.357	3.0	2	6
G07A	APPENDICECTOMY, MAJC	611	€9,873	0.742	1.093		1.796	0.150	6.3	2	21
G07B	APPENDICECTOMY, MINC	4,513	€5,620	0.636	1.022		1.022	0.143	2.7	1	7
G10A	HERNIA PROCEDURES, MAJC	311	€9,935	0.852	1.808		1.808	0.161	7.5	1	25
G10B	HERNIA PROCEDURES, MINC	1,516	€5,765	0.597	1.049		1.049	0.126	2.0	1	6
G11A	ANAL & STOMAL PROCEDURES, MAJC	297	€7,178	0.546	1.306		1.306	0.133	7.8	1	25
G11B	ANAL & STOMAL PROCEDURES, MINC	843	€3,268	0.331	0.595		0.595	0.109	2.1	1	6
G12A	OTH DIGESTIVE SYS OR PR, MAJC	98	€33,651	0.454	0.593	0.277	6.123	0.170	38.0	21	55
G12B	OTH DIGESTIVE SYS OR PR, INTC	286	€10,339	0.393	0.889		1.881	0.129	12.2	2	29
G12C	OTH DIGESTIVE SYS OR PR, MINC	287	€5,951	0.364	1.083		1.083	0.125	4.7	1	19
G46A	COMPLEX ENDOSCOPY, MAJC	1,166	€8,452	0.202	1.538		1.538	0.113	12.2	1	29
G46B	COMPLEX ENDOSCOPY, MINC	540	€4,602	0.172	0.837		0.837	0.099	4.9	1	20
G47A	GASTROSCOPY, MAJC	1,739	€6,568	0.128	0.483		1.195	0.100	10.7	2	28
G47B	GASTROSCOPY, INTC	1,449	€3,175	0.123	0.578		0.578	0.094	3.9	1	17
G47C	GASTROSCOPY, MINC	1,350	€2,384	0.116	0.434		0.434	0.090	3.3	1	11
G48A	COLONOSCOPY, MAJC	1,443	€6,084	0.137	1.107		1.107	0.103	9.1	1	26
G48B	COLONOSCOPY, MINC	1,251	€3,595	0.124	0.654		0.654	0.107	4.2	1	17
G60A	DIGESTIVE MALIGNANCY, MAJC	734	€9,403	0.114	1.711		1.711	0.136	12.2	1	29
G60B	DIGESTIVE MALIGNANCY, MINC	579	€4,842	0.113	0.881		0.881	0.116	4.6	1	21
G61A	GASTROINT HAEMORRHAGE, MAJC	696	€4,371	0.063	0.795		0.795	0.100	6.8	1	24

DRG	DRG Description	Indicative Inpatient Cases	Inpatient Inlier Price	Same Day RV	One Day RV	Multi Low RV	Inlier RV	Multi High RV	Average Length of Stay	Lequiv (Low Boundary)	Hequiv (High Boundary)
G61B	GASTROINT HAEMORRHAGE, MINC	972	€2,124	0.062	0.386		0.386	0.101	3.2	1	10
G64A	INFLAM BOWEL DISEASE, MAJC	316	€5,435	0.294	0.989		0.989	0.145	6.6	1	24
G64B	INFLAM BOWEL DISEASE, MINC	749	€3,248	0.294	0.591		0.591	0.123	4.2	1	14
G65A	GASTROINT OBSTRUCTION, MAJC	433	€6,108	0.073	1.111		1.111	0.111	11.4	1	28
G65B	GASTROINT OBSTRUCTION, MINC	919	€2,951	0.073	0.537		0.537	0.130	4.1	1	15
G66A	ABDMNL PAIN/MESENT ADNTS, MAJC	2,254	€2,323	0.070	0.423		0.423	0.105	2.9	1	9
G66B	ABDMNL PAIN/MESENT ADNTS, MINC	5,484	€1,469	0.058	0.267		0.267	0.100	1.9	1	5
G67A	OESOPHS & GASTROENTS, MAJC	2,778	€5,069	0.075	0.922		0.922	0.124	6.4	1	23
G67B	OESOPHS & GASTROENTS, MINC	4,089	€2,343	0.073	0.426		0.426	0.126	2.2	1	6
G70A	OTHER DIGESTIVE SYS DIS, MAJC	5,826	€3,890	0.079	0.708		0.708	0.110	5.5	1	20
G70B	OTHER DIGESTIVE SYS DIS, MINC	5,582	€2,214	0.057	0.403		0.403	0.115	2.7	1	8
<b>MDC 07 - DISEASES AND DISORDERS OF THE HEPATOBILIARY SYSTEM AND PANCREAS</b>											
H01A	PANCREAS,LIVER&SHUNT PR, MAJC	21	€57,653	3.153	3.324	0.341	10.490	0.229	39.5	22	56
H01B	PANCREAS,LIVER&SHUNT PR, INTC	301	€20,862	2.050	2.632		3.796	0.175	12.8	2	30
H01C	PANCREAS,LIVER&SHUNT PR, MINC	105	€11,055	1.044	2.011		2.011	0.187	7.7	1	25
H02A	MJR BILIARY TRACT PR, MAJC	114	€21,735	0.699	0.891	0.383	3.955	0.188	26.5	9	43
H02B	MJR BILIARY TRACT PR, MINC	170	€10,506	0.496	0.968		1.912	0.126	11.2	2	28
H05A	HEPATOBILIARY DIAG PR, MAJC	58	€18,769	0.814	1.334	1.040	3.415	0.163	20.3	3	37
H05B	HEPATOBILIARY DIAG PR, MINC	33	€7,535	0.327	1.371		1.371	0.111	5.9	1	23
H06A	OTH HEPTOBILRY&PANCRS PR, MAJC	82	€26,762	0.282	0.466	0.367	4.869	0.180	30.2	13	47
H06B	OTH HEPTOBILRY&PANCRS PR, INTC	83	€10,101	0.281	1.838		1.838	0.166	11.8	1	29
H06C	OTH HEPTOBILRY&PANCRS PR, MINC	99	€4,341	0.134	0.790		0.790	0.140	1.9	1	5
H07A	OPEN CHOLECYSTECTOMY, MAJC	22	€20,019	1.287	1.469	0.362	3.642	0.147	24.5	7	41
H07B	OPEN CHOLECYSTECTOMY, INTC	13	€14,695	1.171	1.385	0.429	2.674	0.113	10.9	4	27
H07C	OPEN CHOLECYSTECTOMY, MINC	89	€10,413	1.117	1.376		1.895	0.120	6.9	2	23
H08A	LAP CHOLECYSTECTOMY, MAJC	264	€11,102	0.875	2.020		2.020	0.140	8.7	1	26
H08B	LAP CHOLECYSTECTOMY, MINC	1,759	€6,769	1.232	1.232		1.232	0.116	2.3	0	7
H40A	ENDO PR BLEED OES VARICES,MAJC	28	€20,018	0.423	1.496		3.642	0.170	17.0	2	34
H40B	ENDO PR BLEED OES VARICES,INTC	27	€9,416	0.221	0.718		1.713	0.224	7.7	2	25
H40C	ENDO PR BLEED OES VARICES,MINC	23	€6,275	0.181	0.502		1.142	0.192	5.9	2	18
H43A	ERCP PROCEDURES, MAJC	219	€11,797	0.240	0.512	0.545	2.146	0.128	19.3	4	36
H43B	ERCP PROCEDURES, INTC	397	€6,546	0.230	0.550		1.191	0.111	9.4	2	26
H43C	ERCP PROCEDURES, MINC	675	€4,308	0.220	0.784		0.784	0.096	5.1	1	22
H60A	CIRRHOSIS&ALC HEPATITIS, MAJC	540	€14,309	0.102	0.602	1.001	2.603	0.121	19.6	3	37
H60B	CIRRHOSIS&ALC HEPATITIS, INTC	591	€5,633	0.076	1.025		1.025	0.113	8.0	1	25
H60C	CIRRHOSIS&ALC HEPATITIS, MINC	73	€3,308	0.053	0.602		0.602	0.095	4.1	1	20
H61A	MALG HEPATOBIL SYS&PANCR, MAJC	508	€9,982	0.109	0.678		1.816	0.120	13.8	2	31
H61B	MALG HEPATOBIL SYS&PANCR, MINC	755	€4,799	0.108	0.873		0.873	0.106	5.8	1	23
H62A	PANCREAS DIS -MALIG, MAJC	450	€8,018	0.101	0.554		1.459	0.121	13.4	2	30
H62B	PANCREAS DIS -MALIG, MINC	1,502	€3,135	0.101	0.570		0.570	0.110	5.0	1	19
H63A	OTH DISORDERS OF LIVER, MAJC	589	€9,958	0.097	1.812		1.812	0.129	12.2	1	29
H63B	OTH DISORDERS OF LIVER, INTC	672	€4,534	0.089	0.825		0.825	0.122	5.4	1	20

DRG	DRG Description	Indicative Inpatient Cases	Inpatient Inlier Price	Same Day RV	One Day RV	Multi Low RV	Inlier RV	Multi High RV	Average Length of Stay	Lequiv (Low Boundary)	Hequiv (High Boundary)
H63C	OTH DISORDERS OF LIVER, MINC	463	€2,835	0.088	0.516		0.516	0.096	3.5	1	12
H64A	BILIARY TRACT DISORDERS, MAJC	2,156	€4,784	0.076	0.870		0.870	0.106	8.5	1	25
H64B	BILIARY TRACT DISORDERS, MINC	2,492	€2,316	0.060	0.421		0.421	0.090	4.3	1	14
<b>MDC 08 - DISEASES AND DISORDERS OF THE MUSCULOSKELETAL SYSTEM &amp; CONNECTIVE TISSUE</b>											
I01A	BL&MLT MJR JNT PR LWR LMB,MAJC	63	€53,781	3.822	3.949	0.254	9.785	0.174	41.2	24	58
I01B	BL&MLT MJR JNT PR LWR LMB,MINC	13	€11,743	1.510	1.636	0.250	2.137	0.223	5.6	3	11
I02A	MCRVAS TT/SKIN GRAFT-HAND,MAJC	17	€75,008	2.781	2.887	0.211	13.647	0.154	68.9	52	86
I02B	MCRVAS TT/SKIN GRAFT-HAND,INTC	52	€26,683	1.753	2.035	0.564	4.855	0.194	22.6	6	40
I02C	MCRVAS TT/SKIN GRAFT-HAND,MINC	28	€13,786	1.291	2.508		2.508	0.240	10.7	1	28
I03A	HIP REPLACEMENT, MAJC	369	€20,933	1.139	1.266	0.254	3.809	0.098	27.5	11	45
I03B	HIP REPLACEMENT, MINC	3,530	€11,422	1.063	1.402		2.078	0.087	7.5	2	22
I04A	KNEE REPLACEMENT, MAJC	83	€15,050	1.377	1.649	0.544	2.738	0.132	10.8	3	28
I04B	KNEE REPLACEMENT, MINC	1,298	€11,705	1.369	1.623		2.130	0.110	4.7	2	9
I05A	OTHER JOINT REPLACEMENT, MAJC	28	€14,727	1.392	2.680		2.680	0.123	11.4	1	28
I05B	OTHER JOINT REPLACEMENT, MINC	238	€10,625	1.363	1.933		1.933	0.143	3.6	1	11
I06Z	SPINAL FUSION FOR DEFORMITY	195	€38,465	4.053	5.035		6.998	0.261	7.8	2	25
I07Z	AMPUTATION	92	€40,979	1.571	1.708	0.274	7.456	0.175	39.5	22	56
I08A	OTHER HIP & FEMUR PR, MAJC	641	€23,360	1.206	1.305	0.196	4.250	0.107	32.6	16	50
I08B	OTHER HIP & FEMUR PR, MINC	2,057	€10,783	0.760	1.962		1.962	0.091	11.7	1	29
I09A	SPINAL FUSION, MAJC	41	€56,605	2.488	2.608	0.240	10.299	0.134	49.9	33	67
I09B	SPINAL FUSION, INTC	134	€20,818	1.840	2.489		3.788	0.156	10.0	2	27
I09C	SPINAL FUSION, MINC	304	€13,751	1.594	2.502		2.502	0.168	4.3	1	14
I10A	OTHER BACK & NECK PR, MAJC	117	€12,863	0.796	2.340		2.340	0.135	14.5	1	32
I10B	OTHER BACK & NECK PR, MINC	850	€6,383	0.664	1.161		1.161	0.161	2.9	1	9
I11Z	LIMB LENGTHENING PROCEDURES	42	€12,702	1.217	1.582		2.311	0.218	5.3	2	15
I12A	MISC PR INFC/INFM BNE/JNT,MAJC	103	€37,423	1.067	1.171	0.209	6.809	0.148	45.0	28	62
I12B	MISC PR INFC/INFM BNE/JNT,INTC	219	€13,983	0.809	1.387		2.544	0.160	14.6	2	32
I12C	MISC PR INFC/INFM BNE/JNT,MINC	191	€7,904	0.534	1.438		1.438	0.120	7.4	1	24
I13A	HUMER,TIBIA,FIBUL,ANKL PR,MAJC	635	€11,324	1.033	2.060		2.060	0.108	10.5	1	27
I13B	HUMER,TIBIA,FIBUL,ANKL PR,MINC	3,308	€6,466	0.672	1.176		1.176	0.116	2.9	1	9
I15A	CRANIO-FACIAL SURGERY, MAJC	31	€17,852	1.539	2.109		3.248	0.252	4.2	2	9
I15B	CRANIO-FACIAL SURGERY, MINC	23	€9,849	0.987	1.255		1.792	0.164	5.1	2	13
I16Z	OTHER SHOULDER PROCEDURES	468	€5,836	0.734	1.062		1.062	0.124	1.2	1	2
I17A	MAXILLO-FACIAL SURGERY, MAJC	23	€12,924	1.061	2.351		2.351	0.245	7.1	1	24
I17B	MAXILLO-FACIAL SURGERY, MINC	34	€5,213	0.600	0.949		0.949	0.184	2.8	1	8
I18A	OTHER KNEE PROCEDURES, MAJC	265	€5,547	0.530	1.009		1.009	0.101	4.2	1	15
I18B	OTHER KNEE PROCEDURES, MINC	201	€3,706	0.399	0.674		0.674	0.084	1.4	1	3
I19A	OTHER ELBOW & FOREARM PR, MAJC	194	€8,323	0.790	1.514		1.514	0.117	7.7	1	25
I19B	OTHER ELBOW & FOREARM PR, MINC	2,666	€4,728	0.591	0.860		0.860	0.104	1.5	1	4
I20A	OTHER FOOT PROCEDURES, MAJC	136	€7,893	0.754	1.436		1.436	0.125	5.8	1	23
I20B	OTHER FOOT PROCEDURES, MINC	707	€5,063	0.598	0.921		0.921	0.135	1.5	1	3
I21Z	LOC EX&REM INT FIX DEV HP&FMR	37	€5,963	0.464	1.085		1.085	0.140	3.1	1	10

DRG	DRG Description	Indicative Inpatient Cases	Inpatient Inlier Price	Same Day RV	One Day RV	Multi Low RV	Inlier RV	Multi High RV	Average Length of Stay	Lequiv (Low Boundary)	Hequiv (High Boundary)
I23A	LOC EX&REM INT DEV-HP&FMR,MAJC	114	€6,273	0.491	1.141		1.141	0.132	3.1	1	10
I23B	LOC EX&REM INT DEV-HP&FMR,MINC	269	€3,782	0.268	0.688		0.688	0.123	1.2	1	3
I24A	ARTHROSCOPY, MAJC	28	€6,564	0.552	1.194		1.194	0.139	5.2	1	22
I24B	ARTHROSCOPY, MINC	50	€3,484	0.390	0.634		0.634	0.085	1.4	1	4
I25A	BONE&JNT DIAG PR INC BIOP,MAJC	54	€13,099	0.231	2.383		2.383	0.119	17.6	1	35
I25B	BONE&JNT DIAG PR INC BIOP,MINC	76	€5,211	0.170	0.948		0.948	0.119	4.3	1	20
I27A	SOFT TISSUE PROCEDURES, MAJC	141	€16,241	0.691	1.143	0.906	2.955	0.153	20.4	3	37
I27B	SOFT TISSUE PROCEDURES, MINC	565	€5,294	0.348	0.963		0.963	0.132	2.7	1	10
I28A	OTH MUSCULOSKELETAL PR, MAJC	92	€18,150	0.768	0.998	0.461	3.302	0.120	22.9	6	40
I28B	OTH MUSCULOSKELETAL PR, INTC	361	€6,364	0.670	1.158		1.158	0.105	3.6	1	14
I28C	OTH MUSCULOSKELETAL PR, MINC	142	€4,438	0.364	0.808		0.808	0.094	1.6	1	5
I29Z	KNEE RECONSTRUCTION/REVISION	264	€7,166	1.015	1.304		1.304	0.173	1.2	1	2
I30Z	HAND PROCEDURES	1,511	€4,806	0.428	0.874		0.874	0.124	1.1	1	3
I31A	REV OF HIP REPLACEMENT, MAJC	48	€42,751	2.241	2.345	0.209	7.778	0.145	44.0	27	61
I31B	REV OF HIP REPLACEMENT, INTC	126	€23,634	1.937	2.274	0.675	4.300	0.120	17.9	4	35
I31C	REV OF HIP REPLACEMENT, MINC	234	€17,491	1.802	2.262		3.182	0.126	9.2	2	26
I32A	REV OF KNEE REPLACEMENT, MAJC	34	€37,064	2.610	2.775	0.331	6.743	0.159	30.1	13	47
I32B	REV OF KNEE REPLACEMENT, MINC	86	€19,880	2.245	2.702		3.617	0.172	8.0	2	23
I40Z	INFUSION FOR MUSCLSKLT DIS, SD	83	€457	0.083					0.5	0.5	0.5
I60Z	FEMORAL SHAFT FRACTURES	85	€7,005	0.314	1.275		1.275	0.147	4.9	1	18
I61A	DISTAL FEMORAL FRACTURES, MAJC	24	€13,134	0.192	0.632	0.879	2.390	0.159	20.0	3	37
I61B	DISTAL FEMORAL FRACTURES, MINC	72	€4,242	0.119	0.772		0.772	0.084	6.7	1	24
I63A	SPR,STR&DSL HIP,PEL&THIGH,MAJC	39	€6,591	0.219	1.199		1.199	0.171	14.6	1	32
I63B	SPR,STR&DSL HIP,PEL&THIGH,MINC	111	€2,046	0.108	0.372		0.372	0.079	3.1	1	10
I64A	OSTEOMYELITIS, MAJC	176	€20,455	0.088	0.222	0.269	3.722	0.134	30.6	14	48
I64B	OSTEOMYELITIS, MINC	342	€8,019	0.074	0.536		1.459	0.111	12.2	2	29
I65A	MUSCULOSK MALIG NEOPLASM, MAJC	190	€18,652	0.150	1.231		3.394	0.157	17.2	2	34
I65B	MUSCULOSK MALIG NEOPLASM, MINC	663	€7,663	0.117	1.394		1.394	0.165	5.5	1	20
I66A	INFLAM MUSCULOSK DIS, MAJC	106	€25,942	0.177	0.375	0.395	4.720	0.145	28.9	12	46
I66B	INFLAM MUSCULOSK DIS, INTC	204	€10,927	0.116	0.740		1.988	0.166	10.5	2	28
I66C	INFLAM MUSCULOSK DIS, MINC	510	€6,229	0.100	1.133		1.133	0.156	5.3	1	21
I67A	SEPTIC ARTHRITIS, MAJC	54	€12,340	0.172	0.468	0.592	2.245	0.117	21.3	4	38
I67B	SEPTIC ARTHRITIS, MINC	60	€5,587	0.126	1.016		1.016	0.095	8.3	1	25
I68A	NON-SURG SPINAL DIS, MAJC	1,482	€7,450	0.068	1.355		1.355	0.102	15.1	1	32
I68B	NON-SURG SPINAL DIS, MINC	2,132	€2,918	0.067	0.531		0.531	0.100	4.4	1	17
I69A	BONE DISEASES & ARTHROP, MAJC	336	€6,715	0.072	1.222		1.222	0.107	13.3	1	30
I69B	BONE DISEASES & ARTHROP, MINC	580	€3,487	0.067	0.634		0.634	0.103	5.1	1	19
I71A	OTH MUSCULOTENDINOUS DIS, MAJC	469	€5,936	0.059	1.080		1.080	0.092	10.4	1	27
I71B	OTH MUSCULOTENDINOUS DIS, MINC	1,297	€2,463	0.058	0.448		0.448	0.102	3.2	1	11
I72A	SPECIFIC MUSCTENDIN DIS, MAJC	210	€8,369	0.090	0.568		1.523	0.117	15.3	2	32
I72B	SPECIFIC MUSCTENDIN DIS, MINC	492	€2,767	0.089	0.504		0.504	0.121	4.1	1	14
I73A	AFTCARE MUSCSK IMPL/PROS, MAJC	127	€12,521	0.181	0.372	0.381	2.278	0.107	23.3	6	40



DRG	DRG Description	Indicative Inpatient Cases	Inpatient Inlier Price	Same Day RV	One Day RV	Multi Low RV	Inlier RV	Multi High RV	Average Length of Stay	Lequiv (Low Boundary)	Lequiv (High Boundary)
I73B	AFTCARE MUSCSK IMPL/PROS, MINC	230	€3,398	0.117	0.618		0.618	0.089	6.3	1	23
I74A	INJ FOREARM,WRIST,HAND,FT,MAJC	374	€6,996	0.146	1.273		1.273	0.084	15.1	1	32
I74B	INJ FOREARM,WRIST,HAND,FT,MINC	916	€1,566	0.125	0.285		0.285	0.060	1.4	1	3
I75A	INJ SH,ARM,ELB,KN,LEG,ANK,MAJC	618	€7,997	0.099	0.371	0.542	1.455	0.078	20.4	3	37
I75B	INJ SH,ARM,ELB,KN,LEG,ANK,MINC	1,331	€1,912	0.099	0.348		0.348	0.089	3.3	1	11
I76A	OTH MUSCULOSKELETAL DIS, MAJC	122	€15,265	0.091	0.390	0.597	2.777	0.143	22.2	5	39
I76B	OTH MUSCULOSKELETAL DIS, INTC	284	€5,298	0.073	0.964		0.964	0.104	8.1	1	25
I76C	OTH MUSCULOSKELETAL DIS, MINC	377	€2,856	0.070	0.520		0.520	0.106	3.7	1	13
I77A	FRACTURES OF PELVIS, MAJC	421	€12,496	0.064	0.194	0.260	2.273	0.096	25.9	9	43
I77B	FRACTURES OF PELVIS, MINC	498	€4,425	0.053	0.805		0.805	0.076	9.9	1	27
I78A	FRACTURES NECK OF FEMUR, MAJC	257	€11,194	0.114	0.262	0.296	2.037	0.118	24.5	7	41
I78B	FRACTURES NECK OF FEMUR, MINC	571	€4,295	0.105	0.782		0.782	0.085	8.8	1	26
I79A	PATHOLOGICAL FRACTURES, MAJC	135	€15,223	0.112	0.316	0.409	2.770	0.178	23.6	7	41
I79B	PATHOLOGICAL FRACTURES, MINC	305	€5,915	0.058	1.076		1.076	0.091	10.0	1	27
I80Z	FEMORAL FRACT, TRANSFERRED <2D	38	€1,153	0.156	0.210		0.210	0.000	0.8	0	2
I81Z	MUSCULOSKELETAL INJURIES, SD	1,699	€765	0.139					0.5	0.5	0.5
I82Z	OTH SD TREATMT, MUSCLSKL DIS	6,059	€364	0.066					0.5	0.5	0.5
<b>MDC 09 - DISEASES AND DISORDERS OF THE SKIN, SUBCUTANEOUS TISSUE AND BREAST</b>											
J01A	MICRVS TSS TRNS SKN/BRST, MAJC	< 5	€64,940	3.553	3.859	0.612	11.815	0.310	31.0	14	48
J01B	MICRVS TSS TRNS SKN/BRST, MINC	63	€25,418	2.463	2.703	0.480	4.625	0.234	7.0	5	11
J06A	MAJOR PR FOR BREAST DIS, MAJC	172	€8,696	0.836	1.582		1.582	0.123	5.2	1	19
J06B	MAJOR PR FOR BREAST DIS, MINC	1,252	€6,874	0.722	1.251		1.251	0.155	2.4	1	7
J07A	MINOR PR FOR BREAST DIS, MAJC	136	€4,729	0.380	0.860		0.860	0.084	1.4	1	4
J07B	MINOR PR FOR BREAST DIS, MINC	92	€3,020	0.344	0.550		0.550	0.059	1.0	0	2
J08A	OTH SKN GRF& DBRDMNT PR, MAJC	87	€23,914	0.881	1.085	0.408	4.351	0.168	26.3	9	43
J08B	OTH SKN GRF& DBRDMNT PR, INTC	91	€8,210	0.572	1.494		1.494	0.193	5.0	1	19
J08C	OTH SKN GRF& DBRDMNT PR, MINC	228	€5,660	0.266	1.030		1.030	0.182	2.3	1	7
J09Z	PERIANAL & PILONIDAL PROCS	145	€3,914	0.441	0.712		0.712	0.113	1.6	1	4
J10A	SKN,TIS&BRST PLASTIC PR, MAJC	58	€7,611	0.535	1.385		1.385	0.193	4.4	1	17
J10B	SKN,TIS&BRST PLASTIC PR, MINC	102	€5,009	0.266	0.911		0.911	0.241	1.6	1	4
J11A	OTH SKN,SUBC TIS&BRST PR, MAJC	347	€6,426	0.183	1.169		1.169	0.124	6.5	1	24
J11B	OTH SKN,SUBC TIS&BRST PR, MINC	404	€3,874	0.138	0.705		0.705	0.155	1.8	1	5
J12A	LWR LMB PR +ULC/CEL, MAJC	48	€25,357	0.814	1.067	0.507	4.614	0.135	25.4	8	42
J12B	LWR LMB PR +ULC/CEL, MINC	69	€10,263	0.497	0.954		1.867	0.163	11.1	2	28
J13A	LWR LMB PR -ULC/CEL, MAJC	42	€11,205	0.621	2.039		2.039	0.137	9.2	1	26
J13B	LWR LMB PR -ULC/CEL, MINC	74	€5,152	0.394	0.937		0.937	0.181	3.0	1	12
J14Z	MAJOR BREAST RECONSTRUCTIONS	138	€18,219	2.299	2.638		3.315	0.151	5.2	2	15
J60A	SKIN ULCERS, MAJC	191	€10,476	0.058	0.181	0.246	1.906	0.066	25.2	8	42
J60B	SKIN ULCERS, INTC	243	€4,280	0.057	0.779		0.779	0.084	8.1	1	25
J60C	SKIN ULCERS, MINC	143	€3,415	0.014	0.621		0.621	0.084	5.2	1	22
J62A	MALIGNANT BREAST DIS, MAJC	163	€11,240	0.111	2.045		2.045	0.160	12.3	1	29
J62B	MALIGNANT BREAST DIS, MINC	293	€5,265	0.106	0.958		0.958	0.113	4.4	1	21

DRG	DRG Description	Indicative Inpatient Cases	Inpatient Inlier Price	Same Day RV	One Day RV	Multi Low RV	Inlier RV	Multi High RV	Average Length of Stay	Lequiv (Low Boundary)	Lequiv (High Boundary)
J63A	NON-MALIGNANT BREAST DIS, MAJC	173	€2,678	0.081	0.487		0.487	0.138	2.9	1	12
J63B	NON-MALIGNANT BREAST DIS, MINC	50	€534	0.078	0.097		0.097	0.058	0.6	0	1
J64A	CELLULITIS, MAJC	1,999	€6,568	0.079	1.195		1.195	0.099	10.4	1	27
J64B	CELLULITIS, MINC	3,906	€2,536	0.072	0.461		0.461	0.096	3.5	1	11
J65A	TRAUMA TO SKN,SUB TIS&BST,MAJC	535	€7,346	0.076	1.336		1.336	0.093	14.2	1	31
J65B	TRAUMA TO SKN,SUB TIS&BST,MINC	999	€1,831	0.076	0.333		0.333	0.092	2.4	1	7
J67A	MINOR SKIN DISORDERS, MAJC	447	€4,555	0.081	0.829		0.829	0.139	4.4	1	21
J67B	MINOR SKIN DISORDERS, MINC	1,446	€2,024	0.056	0.368		0.368	0.110	2.0	1	5
J68A	MAJOR SKIN DISORDERS, MAJC	641	€3,481	0.059	0.633		0.633	0.091	5.7	1	21
J68B	MAJOR SKIN DISORDERS, MINC	278	€1,613	0.046	0.294		0.294	0.083	3.2	1	10
J69A	SKIN MALIGNANCY, MAJC	80	€13,771	0.163	0.944		2.506	0.156	16.9	2	34
J69B	SKIN MALIGNANCY, INTC	67	€7,190	0.160	1.308		1.308	0.149	8.5	1	25
J69C	SKIN MALIGNANCY, MINC	48	€5,395	0.069	0.982		0.982	0.151	3.3	1	15
<b>MDC 10 - ENDOCRINE, NUTRITIONAL AND METABOLIC DISEASES AND DISORDERS</b>											
K01A	OR PR FOR DIABETIC COMPL, MAJC	58	€62,617	1.571	1.699	0.255	11.393	0.164	56.1	39	73
K01B	OR PR FOR DIABETIC COMPL, INTC	109	€21,257	0.831	1.010	0.357	3.867	0.166	26.1	9	43
K01C	OR PR FOR DIABETIC COMPL, MINC	167	€12,158	0.583	1.126		2.212	0.146	13.9	2	31
K02A	PITUITARY PROCEDURES, MAJC	15	€19,060	1.131	1.390	0.519	3.468	0.147	13.8	5	31
K02B	PITUITARY PROCEDURES, MINC	56	€10,988	1.029	1.223	0.388	1.999	0.158	7.4	3	19
K03Z	ADRENAL PROCEDURES	63	€13,875	1.419	1.787		2.524	0.199	8.2	2	25
K05A	PARATHYROID PROCEDURES, MAJC	35	€12,711	1.057	2.313		2.313	0.171	7.5	1	24
K05B	PARATHYROID PROCEDURES, MINC	122	€5,690	0.745	1.035		1.035	0.153	2.0	1	5
K06A	THYROID PROCEDURES, MAJC	53	€11,997	1.113	2.183		2.183	0.174	6.0	1	22
K06B	THYROID PROCEDURES, MINC	480	€6,714	0.886	1.222		1.222	0.175	2.2	1	6
K08Z	THYROGLOSSAL PROCEDURES	24	€4,919	0.498	0.895		0.895	0.176	1.6	1	4
K09A	OTH ENDCRN,NUTR&METAB PR, MAJC	38	€35,920	0.925	1.085	0.321	6.535	0.242	35.0	18	52
K09B	OTH ENDCRN,NUTR&METAB PR, MINC	75	€10,668	0.518	1.941		1.941	0.186	9.6	1	27
K10A	REV & OPEN BARIATRIC PR, MAJC	< 5	€11,165	1.588	1.735		2.031	0.363	4.3	2	13
K10B	REV & OPEN BARIATRIC PR, MINC	5	€7,293	1.069	1.155		1.327	0.151	3.3	2	8
K11A	MAJOR LAP BARIATRIC PR, MAJC	32	€10,130	1.420	1.561		1.843	0.153	3.1	2	6
K11B	MAJOR LAP BARIATRIC PR, MINC	23	€8,603	1.375	1.565		1.565	0.417	2.9	1	6
K12A	OTHER BARIATRIC PROCS, MAJC	< 5	€7,043	0.986	1.281		1.281	0.122	2.0	2	2
K12B	OTHER BARIATRIC PROCS, MINC	< 5	€4,806	0.709	0.874		0.874	0.025	2.0	1	4
K13Z	PLAS OR PROC - END,NUT,MET DIS	25	€9,196	0.985	1.673		1.673	0.293	2.5	1	6
K40A	ENDO&INVEST PR METAB DIS, MAJC	294	€11,116	0.141	0.768		2.022	0.124	15.6	2	33
K40B	ENDO&INVEST PR METAB DIS, MINC	134	€5,464	0.126	0.994		0.994	0.114	6.6	1	24
K60A	DIABETES, MAJC	938	€7,708	0.080	1.402		1.402	0.132	11.2	1	28
K60B	DIABETES, MINC	2,683	€4,115	0.055	0.749		0.749	0.129	4.6	1	16
K61A	SEV NUTRIT DISTURBANCE, MAJC	36	€33,572	0.077	0.183	0.212	6.108	0.132	46.3	29	63
K61B	SEV NUTRIT DISTURBANCE, MINC	24	€11,432	0.067	0.290	0.447	2.080	0.128	21.5	5	39

DRG	DRG Description	Indicative Inpatient Cases	Inpatient Inlier Price	Same Day RV	One Day RV	Multi Low RV	Inlier RV	Multi High RV	Average Length of Stay	Lequiv (Low Boundary)	Hequiv (High Boundary)
K62A	MISC METABOLIC DISORDERS, MAJC	751	€8,688	0.070	1.581		1.581	0.119	12.8	1	30
K62B	MISC METABOLIC DISORDERS, INTC	1,729	€4,579	0.070	0.833		0.833	0.118	6.0	1	23
K62C	MISC METABOLIC DISORDERS, MINC	2,189	€3,136	0.054	0.571		0.571	0.115	3.8	1	13
K63A	INBORN ERR OF METABOLISM, MAJC	175	€9,339	0.157	1.699		1.699	0.317	5.5	1	23
K63B	INBORN ERR OF METABOLISM, MINC	29	€4,305	0.157	0.783		0.783	0.237	2.8	1	11
K64A	ENDOCRINE DISORDERS, MAJC	822	€5,688	0.067	1.035		1.035	0.130	6.2	1	23
K64B	ENDOCRINE DISORDERS, MINC	536	€2,909	0.063	0.529		0.529	0.147	2.6	1	8
<b>MDC 11 - DISEASES AND DISORDERS OF THE KIDNEY AND URINARY TRACT</b>											
L02A	OP INS PERI CTH DIALYSIS, MAJC	33	€13,136	0.418	1.076		2.390	0.178	12.1	2	29
L02B	OP INS PERI CTH DIALYSIS, MINC	53	€5,880	0.291	1.070		1.070	0.191	3.8	1	12
L03A	KDNY,URT&MJR BLDR PR NPSM,MAJC	60	€32,940	1.917	2.157	0.479	5.993	0.228	26.1	9	43
L03B	KDNY,URT&MJR BLDR PR NPSM,INTC	205	€19,187	1.636	2.007	0.742	3.491	0.149	9.8	3	26
L03C	KDNY,URT&MJR BLDR PR NPSM,MINC	343	€13,872	1.456	1.812		2.524	0.181	6.2	2	16
L04A	KDY,URT&MJR BLDR PR N-NPM,MAJC	197	€26,915	0.655	0.904	0.499	4.897	0.165	26.2	9	43
L04B	KDY,URT&MJR BLDR PR N-NPM,INTC	672	€9,541	0.549	1.736		1.736	0.148	7.6	1	25
L04C	KDY,URT&MJR BLDR PR N-NPM,MINC	1,473	€5,784	0.494	1.052		1.052	0.188	3.0	1	10
L05A	TRANSURTH PROSTMY,URI DIS,MAJC	23	€11,063	0.606	1.075		2.013	0.105	16.4	2	33
L05B	TRANSURTH PROSTMY,URI DIS,MINC	76	€6,651	0.595	1.210		1.210	0.096	5.4	1	18
L06A	MINOR BLADDER PROCEDURES, MAJC	59	€20,373	0.785	1.050	0.531	3.707	0.224	23.1	6	40
L06B	MINOR BLADDER PROCEDURES, INTC	83	€8,779	0.492	1.597		1.597	0.139	7.6	1	25
L06C	MINOR BLADDER PROCEDURES, MINC	123	€4,774	0.332	0.869		0.869	0.179	4.2	1	15
L07A	OTH TRANSURETHRAL PROCS, MAJC	247	€7,554	0.444	1.374		1.374	0.130	9.4	1	26
L07B	OTH TRANSURETHRAL PROCS, MINC	911	€3,744	0.307	0.681		0.681	0.120	3.0	1	10
L08A	URETHRAL PROCEDURES, MAJC	20	€6,986	0.551	1.271		1.271	0.167	6.1	1	23
L08B	URETHRAL PROCEDURES, MINC	69	€4,582	0.477	0.834		0.834	0.154	2.5	1	7
L09A	OTH PR KIDNY&URNRY TR DIS,MAJC	40	€47,838	0.616	0.796	0.359	8.704	0.217	40.1	23	57
L09B	OTH PR KIDNY&URNRY TR DIS,INTC	53	€12,568	0.574	2.287		2.287	0.170	11.0	1	28
L09C	OTH PR KIDNY&URNRY TR DIS,MINC	112	€6,335	0.557	1.153		1.153	0.183	3.0	1	10
L40Z	URETEROSCOPY	78	€3,562	0.287	0.648		0.648	0.137	2.8	1	10
L41Z	CYSTOURETHROSCOPY URI DIS, SD	63	€766	0.139					0.5	0.5	0.5
L42Z	ESW LITHOTRIPSY	78	€3,514	0.075	0.639		0.639	0.085	2.8	1	9
L60A	KIDNEY FAILURE, MAJC	572	€17,634	0.124	0.467	0.685	3.208	0.144	22.0	5	39
L60B	KIDNEY FAILURE, INTC	1,765	€6,438	0.122	1.171		1.171	0.127	7.6	1	25
L60C	KIDNEY FAILURE, MINC	440	€3,475	0.121	0.632		0.632	0.140	3.5	1	15
L61Z	HAEMODIALYSIS	51	€4,479	0.165	0.815		0.815	0.306	1.3	1	3
L62A	KDNY&URNRY TR NEOPLASMS, MAJC	200	€8,900	0.121	0.620		1.619	0.129	14.6	2	32

DRG	DRG Description	Indicative Inpatient Cases	Inpatient Inlier Price	Same Day RV	One Day RV	Multi Low RV	Inlier RV	Multi High RV	Average Length of Stay	Lequiv (Low Boundary)	Lequiv (High Boundary)
L62B	KDNY&UNRY TR NEOPLASMS, MINC	292	€4,002	0.097	0.728		0.728	0.105	4.5	1	20
L63A	KDNY&UNRY TR INFECTIONS, MAJC	6,532	€6,490	0.069	0.440		1.181	0.098	12.3	2	29
L63B	KDNY&UNRY TR INFECTIONS, MINC	6,639	€2,930	0.060	0.533		0.533	0.075	4.5	1	14
L64A	URINARY STONES & OBSTR, MAJC	836	€3,437	0.161	0.625		0.625	0.106	4.3	1	18
L64B	URINARY STONES & OBSTR, MINC	1,649	€2,144	0.070	0.390		0.390	0.103	2.2	1	6
L65A	KDNY&UNRY TR SGNS&SYMPS, MAJC	687	€5,546	0.077	1.009		1.009	0.096	9.4	1	26
L65B	KDNY&UNRY TR SGNS&SYMPS, MINC	1,652	€2,353	0.056	0.428		0.428	0.098	3.4	1	11
L66Z	URETHRAL STRICTURE	66	€3,052	0.065	0.555		0.555	0.148	2.5	1	8
L67A	OTH KIDNY&URNRY TRCT DIS, MAJC	974	€6,388	0.102	1.162		1.162	0.126	8.8	1	26
L67B	OTH KIDNY&URNRY TRCT DIS, INTC	898	€3,114	0.085	0.566		0.566	0.129	3.2	1	11
L67C	OTH KIDNY&URNRY TRCT DIS, MINC	127	€1,984	0.047	0.361		0.361	0.132	2.0	1	6
L68Z	PERITONEAL DIALYSIS	< 5		0.337					0.5	0	3
<b>MDC 12 - DISEASES AND DISORDERS OF THE MALE REPRODUCTIVE SYSTEM</b>											
M01A	MAJOR MALE PELVIC PROCS, MAJC	47	€16,614	1.854	2.244		3.023	0.142	8.0	2	25
M01B	MAJOR MALE PELVIC PROCS, MINC	432	€13,762	1.725	1.985		2.504	0.111	3.7	2	7
M02A	TRANSURTH PROSTMY,REP DIS,MAJC	37	€8,213	0.602	0.899		1.494	0.126	8.9	2	26
M02B	TRANSURTH PROSTMY,REP DIS,MINC	277	€6,009	0.569	0.744		1.093	0.132	3.8	2	8
M03A	PENIS PROCEDURES, MAJC	39	€10,615	0.619	1.931		1.931	0.217	5.1	1	20
M03B	PENIS PROCEDURES, MINC	67	€5,532	0.374	1.006		1.006	0.178	1.6	1	4
M04Z	TESTES PROCEDURES	697	€4,800	0.438	0.873		0.873	0.162	1.9	1	5
M05Z	CIRCUMCISION	123	€3,631	0.336	0.661		0.661	0.184	1.2	1	2
M06A	OTH MALE REPROD SYS OR PR,MAJC	49	€11,358	0.301	2.067		2.067	0.166	13.7	1	31
M06B	OTH MALE REPROD SYS OR PR,MINC	39	€4,104	0.287	0.747		0.747	0.115	2.5	1	8
M40Z	CYSTURTHRSCPY,MALE REPR DIS,SD	5	€271	0.049					0.5	0.5	0.5
M60A	MALE REPR SYS MALIG, MAJC	344	€7,333	0.116	1.334		1.334	0.124	9.9	1	27
M60B	MALE REPR SYS MALIG, MINC	153	€3,946	0.121	0.718		0.718	0.114	4.8	1	22
M61A	BENIGN PROSTATIC HYPERTR, MAJC	34	€3,324	0.101	0.605		0.605	0.078	5.8	1	23
M61B	BENIGN PROSTATIC HYPERTR, MINC	49	€2,122	0.040	0.386		0.386	0.060	2.9	1	12
M62A	MALE REPROD SYS INFLAMM, MAJC	227	€5,110	0.118	0.930		0.930	0.107	8.3	1	25
M62B	MALE REPROD SYS INFLAMM, MINC	770	€2,233	0.064	0.406		0.406	0.109	2.9	1	9
M63Z	MALE STERILISATION PROCS	< 5	€1,860	0.282	0.338		0.338	0.000	0.9	0	2
M64A	OTHER MALE REPROD SYS DIS,MAJC	86	€3,572	0.111	0.650		0.650	0.101	4.4	1	19
M64B	OTHER MALE REPROD SYS DIS,MINC	582	€1,692	0.085	0.308		0.308	0.092	1.6	1	4
<b>MDC 13 - DISEASES AND DISORDERS OF THE FEMALE REPRODUCTIVE SYSTEM</b>											
N01A	PELVIC EVISC & RAD VLVMY, MAJC	36	€29,386	2.313	2.546	0.467	5.347	0.210	24.2	7	41
N01B	PELVIC EVISC & RAD VLVMY, MINC	52	€13,245	1.444	1.637	0.386	2.410	0.216	7.3	3	18

DRG	DRG Description	Indicative Inpatient Cases	Inpatient Inlier Price	Same Day RV	One Day RV	Multi Low RV	Inlier RV	Multi High RV	Average Length of Stay	Lequiv (Low Boundary)	Lequiv (High Boundary)
N04A	HYSTERECTOMY FOR N-MAL, MAJC	140	€12,571	1.117	1.351	0.468	2.287	0.185	6.9	3	17
N04B	HYSTERECTOMY FOR N-MAL, MINC	1,094	€8,644	0.894	1.120		1.573	0.169	3.9	2	8
N05A	OOPH&COM FAL TBE PR N-MAL,MAJC	51	€11,379	0.936	2.070		2.070	0.200	6.5	1	24
N05B	OOPH&COM FAL TBE PR N-MAL,MINC	455	€6,482	0.648	1.179		1.179	0.195	2.6	1	8
N06A	FEM REP SYS RECON PROC, MAJC	32	€9,608	0.954	1.218		1.748	0.204	4.6	2	12
N06B	FEM REP SYS RECON PROC, MINC	481	€4,764	0.484	0.867		0.867	0.198	2.8	1	7
N07A	OTH UTRS & ADN PR N-MAL, MAJC	883	€5,030	0.477	0.915		0.915	0.181	2.6	1	8
N07B	OTH UTRS & ADN PR N-MAL, MINC	172	€3,052	0.334	0.555		0.555	0.164	1.1	1	2
N08Z	ENDOS & LAPAR PR, FEM REPR SYS	255	€4,671	0.396	0.850		0.850	0.157	2.2	1	6
N09Z	OTH VAGINA,CERVIX&VULVA PROCS	554	€3,635	0.232	0.661		0.661	0.162	2.3	1	7
N10Z	DXC CURETTGE, DXC HYSTEROSCOPY	505	€2,988	0.211	0.544		0.544	0.130	1.8	1	5
N11A	OTH FEM REPROD SYS PR, MAJC	93	€12,372	0.628	2.251		2.251	0.173	11.5	1	28
N11B	OTH FEM REPROD SYS PR, MINC	< 5	€4,071	0.289	0.741		0.741	0.126	2.4	1	8
N12A	UTERUS & ADNEXA PR MALIG, MAJC	28	€26,964	1.456	1.770	0.627	4.906	0.207	22.7	6	40
N12B	UTERUS & ADNEXA PR MALIG, INTC	141	€13,490	1.164	1.594		2.454	0.162	7.6	2	22
N12C	UTERUS & ADNEXA PR MALIG, MINC	318	€9,372	0.991	1.705		1.705	0.188	4.2	1	13
N60A	FEMALE REPROD SYS MALIG, MAJC	205	€13,327	0.108	0.571	0.927	2.425	0.108	16.7	3	34
N60B	FEMALE REPROD SYS MALIG, MINC	370	€4,622	0.093	0.841		0.841	0.148	5.7	1	23
N61A	FEM REPROD SYS INFECT, MAJC	86	€4,217	0.073	0.767		0.767	0.111	5.8	1	23
N61B	FEM REPROD SYS INFECT, MINC	263	€2,033	0.036	0.370		0.370	0.125	2.4	1	8
N62A	MNSTRL&OTH FEM REPR DIS, MAJC	490	€2,943	0.074	0.535		0.535	0.111	3.3	1	13
N62B	MNSTRL&OTH FEM REPR DIS, MINC	1,782	€1,550	0.056	0.282		0.282	0.108	2.0	1	5
<b>MDC 14 - PREGNANCY, CHILDBIRTH AND THE PEURPERIUM</b>											
O01A	CAESAREAN DELIVERY, MAJC	1,503	€11,158	0.373	0.704	0.663	2.030	0.114	10.5	3	27
O01B	CAESAREAN DELIVERY, INTC	7,309	€5,353	0.271	0.411	0.281	0.974	0.105	5.2	3	10
O01C	CAESAREAN DELIVERY, MINC	10,776	€3,934	0.268	0.357	0.179	0.716	0.110	3.9	3	6
O02A	VAGINAL DELIVERY +OR PR, MAJC	169	€8,055	0.258	0.500	0.483	1.466	0.160	4.9	3	10
O02B	VAGINAL DELIVERY +OR PR, MINC	627	€4,714	0.239	0.445		0.858	0.182	3.3	2	7
O03A	ECTOPIC PREGNANCY, MAJC	131	€5,977	0.562	1.087		1.087	0.223	2.8	1	8
O03B	ECTOPIC PREGNANCY, MINC	522	€3,561	0.355	0.648		0.648	0.152	1.8	1	5
O04A	POSTPARTUM&POST ABORTN+OR,MAJC	59	€10,534	0.460	1.917		1.917	0.266	5.4	1	19
O04B	POSTPARTUM&POST ABORTN+OR,MINC	143	€3,560	0.269	0.648		0.648	0.208	2.2	1	7
O05Z	ABORTION WITH OR PROCEDURES	2,393	€2,728	0.227	0.496		0.496	0.144	1.0	0	3
O60A	VAGINAL DELIVERY, MAJC	4,065	€5,276	0.082	0.375		0.960	0.154	4.3	2	10
O60B	VAGINAL DELIVERY, INTC	16,465	€3,533	0.077	0.643		0.643	0.145	2.9	1	7
O60C	VAGINAL DELIVERY, MINC	14,385	€2,584	0.077	0.470		0.470	0.112	2.1	1	5
O61A	POSTPART&POST ABORTN -OR, MAJC	619	€2,982	0.083	0.543		0.543	0.142	3.7	1	13
O61B	POSTPART&POST ABORTN -OR, MINC	2,233	€1,373	0.032	0.250		0.250	0.095	2.4	1	6
O63A	ABORTION W/O OR PROCS, MAJC	240	€3,023	0.070	0.550		0.550	0.122	2.0	1	6
O63B	ABORTION W/O OR PROCS, MINC	2,162	€1,092	0.069	0.199		0.199	0.128	1.1	1	3

DRG	DRG Description	Indicative Inpatient Cases	Inpatient Inlier Price	Same Day RV	One Day RV	Multi Low RV	Inlier RV	Multi High RV	Average Length of Stay	Lequiv (Low Boundary)	Lequiv (High Boundary)
O66A	ANTENATAL&OTH OBS ADM, MAJC	9,050	€1,524	0.045	0.277		0.277	0.089	2.3	1	6
O66B	ANTENATAL&OTH OBS ADM, MINC	24,054	€1,021	0.035	0.186		0.186	0.083	1.5	1	3
<b>MDC 15 - NEWBORNS AND OTHER NEONATES</b>											
P01Z	NEONATE W SIG OR/VENT, D/TR<5D	40	€11,657	0.452	2.121		2.121	0.370	2.7	1	9
P02Z	NEO,CARDIOTHORACIC/VASCULAR PR	51	€72,028	3.646	4.057	0.823	13.105	0.470	28.7	12	46
P03A	NEO,ADMWT 1000-1499G+OR/V,MAJC	54	€61,996	0.128	0.236	0.217	11.280	0.143	69.4	52	86
P03B	NEO,ADMWT 1000-1499G+OR/V,MINC	131	€40,822	0.119	0.239	0.240	7.427	0.147	47.9	31	65
P04A	NEO,ADMWT 1500-1999G+OR/V,MAJC	20	€46,601	0.115	0.224	0.217	8.479	0.184	55.9	39	73
P04B	NEO,ADMWT 1500-1999G+OR/V,VMINC	102	€30,411	0.115	0.290	0.350	5.533	0.175	33.2	16	50
P05A	NEO,ADMWT 2000-2499G+OR/V,MAJC	17	€71,553	0.134	0.215	0.162	13.019	0.000	96.8	80	114
P05B	NEO,ADMWT 2000-2499G+OR/V,MINC	77	€25,504	0.134	0.480	0.693	4.640	0.214	21.2	7	38
P06A	NEO,ADMWT >=2500G+OR/VENT,MAJC	112	€52,536	0.206	0.580	0.748	9.559	0.092	30.3	13	47
P06B	NEO,ADMWT >=2500G+OR/VENT,MINC	237	€23,798	0.197	1.574		4.330	0.343	11.7	2	29
P07Z	NEONATE, ADMWT <750G +OR PR	< 5	€194,460	0.538	0.765	0.455	35.380	0.000	93.5	77	111
P08Z	NEONATE, ADMWT 750-999G +OR PR	< 5	€103,540	0.771	0.907	0.272	18.838	0.027	83.8	67	101
P60A	NEONATE -OR/V, D/TR<5D, MAJC	94	€4,693	0.176	0.854		0.854	0.351	2.5	1	5
P60B	NEONATE -OR/V, D/TR<5D, MINC	529	€3,083	0.135	0.561		0.561	0.304	1.1	1	3
P61Z	NEONATE, ADMWT <750G -OR PR	66	€85,331	0.213	0.393	0.360	15.525	0.217	60.4	43	77
P62A	NEO, ADMWT 750-999G -OR, MAJC	36	€97,804	0.240	0.378	0.276	17.795	0.179	81.1	64	98
P62B	NEO, ADMWT 750-999G -OR, MINC	60	€65,336	0.153	0.291	0.276	11.887	0.178	60.2	43	77
P63A	NEO,ADMWT 1000-1249G-OR/V,MAJC	15	€52,041	0.101	0.233	0.264	9.469	0.171	52.9	36	70
P63B	NEO,ADMWT 1000-1249G-OR/V,MINC	28	€34,623	0.101	0.269	0.335	6.299	0.181	35.6	19	53
P64A	NEO,ADMWT 1250-1499G-OR/V,MAJC	23	€38,557	0.100	0.261	0.322	7.015	0.169	38.9	22	56
P64B	NEO,ADMWT 1250-1499G-OR/V,MINC	74	€27,602	0.098	0.257	0.318	5.022	0.145	31.8	16	49
P65A	NEO,ADMWT 1500-1999G-OR/V,EXTC	42	€33,965	0.126	0.299	0.346	6.180	0.164	35.1	18	52
P65B	NEO,ADMWT 1500-1999G-OR/V,MAJC	92	€24,204	0.091	0.279	0.375	4.404	0.154	26.4	12	43
P65C	NEO,ADMWT 1500-1999G-OR/V,INTC	294	€16,960	0.087	0.317	0.461	3.086	0.153	20.4	7	37
P65D	NEO,ADMWT 1500-1999G-OR/V,MINC	186	€12,388	0.084	0.518	0.868	2.254	0.170	13.4	3	30
P66A	NEO,ADMWT 2000-2499G-OR/V,EXTC	98	€26,460	0.121	0.643	1.043	4.814	0.215	19.7	5	37
P66B	NEO,ADMWT 2000-2499G-OR/V,MAJC	280	€15,940	0.112	0.510	0.797	2.900	0.205	14.2	4	31
P66C	NEO,ADMWT 2000-2499G-OR/V,INTC	639	€9,523	0.106	1.733		1.733	0.192	8.9	1	26
P66D	NEO,ADMWT 2000-2499G-OR/V,MINC	430	€3,642	0.095	0.663		0.663	0.176	3.9	1	15
P67A	NEO,WT>=2500G-OR/V,<37WKS,EXTC	93	€27,330	0.158	1.121	1.926	4.972	0.278	15.3	3	32
P67B	NEO,WT>=2500G-OR/V,<37WKS,MAJC	174	€15,593	0.133	1.034		2.837	0.238	9.1	2	26
P67C	NEO,WT>=2500G-OR/V,<37WKS,INTC	205	€10,180	0.127	0.702		1.852	0.229	7.1	2	24
P67D	NEO,WT>=2500G-OR/V,<37WKS,MINC	351	€8,011	0.120	1.458		1.458	0.223	4.9	1	19
P68A	NEO,W>=2500G-OR/V,>=37WKS,EXTC	491	€13,753	0.140	0.927		2.502	0.240	9.5	2	26
P68B	NEO,W>=2500G-OR/V,>=37WKS,MAJC	901	€6,354	0.132	1.156		1.156	0.245	4.6	1	18
P68C	NEO,W>=2500G-OR/V,>=37WKS,INTC	1,342	€5,109	0.123	0.930		0.930	0.236	3.3	1	11
P68D	NEO,W>=2500G-OR/V,>=37WKS,MINC	5,088	€2,348	0.070	0.427		0.427	0.151	2.4	1	6
<b>MDC 16 - DISEASES AND DISORDERS OF THE BLOOD AND BLOOD FORMING ORGANS AND IMMUNOLOGICAL DISORDERS</b>											
Q01A	SPLENECTOMY, MAJC	7	€36,075	1.172	1.942	1.541	6.563	0.419	18.7	4	36

DRG	DRG Description	Indicative Inpatient Cases	Inpatient Inlier Price	Same Day RV	One Day RV	Multi Low RV	Inlier RV	Multi High RV	Average Length of Stay	Lequiv (Low Boundary)	Lequiv (High Boundary)
Q01B	SPLENECTOMY, MINC	19	€12,811	1.016	1.454		2.331	0.183	6.2	2	15
Q02A	BLD&IMM SYS DIS+OTH OR PR,MAJC	61	€26,206	0.521	0.723	0.404	4.768	0.233	27.7	11	45
Q02B	BLD&IMM SYS DIS+OTH OR PR,MINC	137	€7,002	0.188	1.274		1.274	0.179	4.9	1	22
Q60A	RETICLEENDO&IMMUNITY DIS, MAJC	840	€9,474	0.139	1.724		1.724	0.255	6.2	1	23
Q60B	RETICLEENDO&IMMUNITY DIS, MINC	369	€3,815	0.071	0.694		0.694	0.137	3.2	1	11
Q61A	RED BLOOD CELL DISORDERS, MAJC	2,223	€6,162	0.113	1.121		1.121	0.120	8.3	1	25
Q61B	RED BLOOD CELL DISORDERS, INTC	2,952	€3,162	0.112	0.575		0.575	0.096	3.4	1	11
Q61C	RED BLOOD CELL DISORDERS, MINC	23	€37	0.038	0.152		0.152	0.093	0.7	0	1
Q62A	COAGULATION DISORDERS, MAJC	295	€7,163	0.099	1.303		1.303	0.186	7.2	1	24
Q62B	COAGULATION DISORDERS, MINC	526	€3,580	0.082	0.651		0.651	0.135	2.7	1	8
<b>MDC 17 - NEOPLASTIC DISORDERS (HAEMATOLOGICAL AND SOLID NEOPLASMS)</b>											
R01A	LYMPHMA&LEUKMA+MJR OR PR, MAJC	49	€35,200	0.892	1.154	0.525	6.404	0.235	28.2	11	45
R01B	LYMPHMA&LEUKMA+MJR OR PR, MINC	52	€11,105	0.599	2.020		2.020	0.202	8.1	1	25
R02A	OTH NPLSTC DIS+MJR OR PR, MAJC	23	€25,943	1.696	2.032	0.672	4.720	0.162	15.6	5	33
R02B	OTH NPLSTC DIS+MJR OR PR, INTC	48	€13,124	1.076	1.513		2.388	0.174	8.4	2	25
R02C	OTH NPLSTC DIS+MJR OR PR, MINC	111	€7,462	0.703	1.358		1.358	0.150	4.3	1	16
R03A	LYMPHMA&LEUKMA+OTH OR PR, MAJC	62	€64,025	0.370	0.583	0.426	11.649	0.161	44.0	27	61
R03B	LYMPHMA&LEUKMA+OTH OR PR, INTC	113	€21,679	0.390	1.574		3.944	0.181	14.0	2	31
R03C	LYMPHMA&LEUKMA+OTH OR PR, MINC	169	€7,294	0.301	1.327		1.327	0.136	5.4	1	22
R04A	OTH NPLSTC DIS+OTH OR PR, MAJC	57	€13,690	0.501	1.164		2.491	0.118	14.5	2	32
R04B	OTH NPLSTC DIS+OTH OR PR, MINC	96	€6,716	0.371	1.222		1.222	0.120	4.7	1	21
R60A	ACUTE LEUKAEMIA, MAJC	441	€40,278	0.161	0.639	0.956	7.328	0.275	24.9	8	42
R60B	ACUTE LEUKAEMIA, MINC	384	€12,344	0.162	2.246		2.246	0.249	6.5	1	24
R61A	LYMPHOMA&N-ACUTE LEUK, MAJC	1,297	€14,597	0.130	0.972		2.656	0.209	13.9	2	31
R61B	LYMPHOMA&N-ACUTE LEUK, MINC	1,657	€5,232	0.109	0.952		0.952	0.147	4.1	1	16
R62A	OTHER NEOPLASTIC DIS, MAJC	168	€7,158	0.059	1.302		1.302	0.078	13.2	1	30
R62B	OTHER NEOPLASTIC DIS, INTC	121	€3,374	0.054	0.614		0.614	0.074	5.2	1	22
R62C	OTHER NEOPLASTIC DIS, MINC	24	€3,103	0.042	0.565		0.565	0.051	3.1	1	11
<b>MDC18 - INFECTIOUS AND PARASITIC DISEASES</b>											
S65A	HIV, MAJC	42	€43,148	0.206	0.393	0.373	7.850	0.232	37.9	21	55
S65B	HIV, INTC	74	€9,993	0.151	1.818		1.818	0.203	9.7	1	27
S65C	HIV, MINC	20	€9,213	0.147	1.676		1.676	0.233	4.1	1	21
T01A	INFECT&PARAS DIS +OR PR, MAJC	106	€42,854	1.186	1.333	0.294	7.797	0.233	39.6	23	57
T01B	INFECT&PARAS DIS +OR PR, INTC	161	€17,005	0.652	1.466		3.094	0.162	17.5	2	35
T01C	INFECT&PARAS DIS +OR PR, MINC	206	€10,667	0.493	0.975		1.941	0.145	10.7	2	28
T40Z	INFECT&PARASTIC DIS +VENT SUPP	28	€25,405	0.150	4.622		4.622	0.215	16.0	1	33
T60A	SEPTICAEMIA, MAJC	358	€22,621	0.114	0.350	0.471	4.116	0.134	25.6	9	43
T60B	SEPTICAEMIA, INTC	1,120	€9,571	0.073	0.629		1.741	0.115	12.1	2	29
T60C	SEPTICAEMIA, MINC	1,125	€5,839	0.067	1.062		1.062	0.110	7.2	1	24
T61A	POSTOP&POSTTRAUM INFECT, MAJC	279	€6,715	0.120	0.487		1.222	0.129	11.2	2	28
T61B	POSTOP&POSTTRAUM INFECT, MINC	640	€3,468	0.093	0.631		0.631	0.115	4.8	1	21
T62A	FEVER OF UNKNOWN ORIGIN, MAJC	543	€7,133	0.094	1.298		1.298	0.159	7.4	1	24

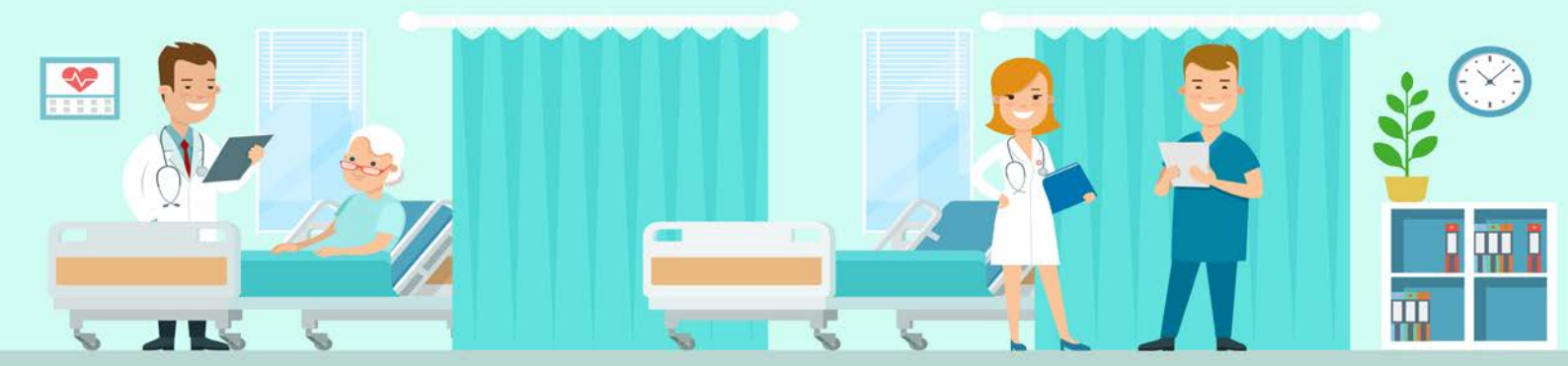
DRG	DRG Description	Indicative Inpatient Cases	Inpatient Inlier Price	Same Day RV	One Day RV	Multi Low RV	Inlier RV	Multi High RV	Average Length of Stay	Lequiv (Low Boundary)	Lequiv (High Boundary)
T62B	FEVER OF UNKNOWN ORIGIN, MINC	1,262	€3,855	0.070	0.701		0.701	0.174	3.2	1	10
T63A	VIRAL ILLNESS, MAJC	313	€5,510	0.119	1.003		1.003	0.230	4.4	1	19
T63B	VIRAL ILLNESS, MINC	1,883	€2,522	0.063	0.459		0.459	0.168	2.1	1	6
T64A	OTH INFECT&PARASITIC DIS, MAJC	54	€19,922	0.111	0.264	0.305	3.625	0.132	28.8	12	46
T64B	OTH INFECT&PARASITIC DIS, INTC	135	€9,232	0.092	0.621		1.680	0.131	11.4	2	28
T64C	OTH INFECT&PARASITIC DIS, MINC	192	€4,203	0.081	0.765		0.765	0.137	4.4	1	20
<b>MDC 19 - MENTAL DISEASES AND DISORDERS</b>											
U60A	MENTAL HEALTH -ECT, SD, MAJC	310	€297	0.054					0.5	0.5	0.5
U60B	MENTAL HEALTH -ECT, SD, MINC	527	€295	0.054					0.5	0.5	0.5
U61A	SCHIZOPHRENIA DISORDERS, MAJC	16	€23,835	0.068	0.128	0.120	4.337	0.081	53.4	36	70
U61B	SCHIZOPHRENIA DISORDERS, MINC	16	€2,054	0.059	0.374		0.374	0.123	5.2	1	22
U62A	PARA&ACUTE PSYCH DIS, MAJC	41	€10,159	0.093	0.288	0.390	1.848	0.106	22.2	5	39
U62B	PARA&ACUTE PSYCH DIS, MINC	98	€4,461	0.066	0.812		0.812	0.113	9.5	1	26
U63A	MAJOR AFFECTIVE DIS, MAJC	34	€17,586	0.112	0.196	0.167	3.200	0.117	36.3	19	53
U63B	MAJOR AFFECTIVE DIS, MINC	69	€4,605	0.062	0.838		0.838	0.113	8.7	1	26
U64A	OTH AFFECT&SOMATOFRM DIS, MAJC	49	€8,882	0.075	1.616		1.616	0.097	16.4	1	33
U64B	OTH AFFECT&SOMATOFRM DIS, MINC	106	€3,606	0.049	0.656		0.656	0.108	5.1	1	20
U65A	ANXIETY DISORDERS, MAJC	189	€6,033	0.062	1.098		1.098	0.142	11.9	1	29
U65B	ANXIETY DISORDERS, MINC	379	€3,097	0.055	0.564		0.564	0.111	4.1	1	15
U66A	EATNG&OBSESSV-COMPLSV DIS,MAJC	63	€42,843	0.118	0.281	0.327	7.795	0.211	41.2	24	58
U66B	EATNG&OBSESSV-COMPLSV DIS,MINC	179	€14,821	0.103	2.697		2.697	0.201	12.8	1	30
U67A	PERSONLTY DIS&ACUTE REACT,MAJC	74	€9,247	0.132	0.304	0.345	1.682	0.097	22.3	5	39
U67B	PERSONLTY DIS&ACUTE REACT,MINC	162	€3,809	0.147	0.693		0.693	0.082	4.0	1	14
U68A	CHILDHOOD MENTAL DIS, MAJC	42	€7,210	0.178	1.312		1.312	0.321	5.0	1	18
U68B	CHILDHOOD MENTAL DIS, MINC	36	€7,013	0.175	1.276		1.276	0.433	3.5	1	13
<b>MDC 20 - ALCOHOL/DRUG USE AND ALCOHOL/DRUG INDUCED ORGANIC MENTAL DISORDERS</b>											
V60A	ALCOHOL INTOX & WITHDRWL, MAJC	583	€4,116	0.065	0.749		0.749	0.107	8.8	1	26
V60B	ALCOHOL INTOX & WITHDRWL, MINC	1,323	€1,736	0.043	0.316		0.316	0.082	3.1	1	10
V61A	DRUG INTOXN&WITHDRAWAL, MAJC	30	€6,280	0.060	1.143		1.143	0.083	12.1	1	29
V61B	DRUG INTOXN&WITHDRAWAL, MINC	140	€1,929	0.046	0.351		0.351	0.087	3.6	1	12
V62A	ALCOHOL USE & DEPENDENCE, MAJC	109	€4,662	0.056	0.320		0.848	0.100	14.9	2	32
V62B	ALCOHOL USE & DEPENDENCE, MINC	430	€1,704	0.042	0.310		0.310	0.082	3.7	1	12
V63Z	OPIOID USE & DEPENDENCE	18	€7,313	0.108	1.330		1.330	0.221	4.4	1	18
V64Z	OTHER DRUG USE & DEPENDENCE	36	€2,409	0.076	0.438		0.438	0.136	2.3	1	7
V65Z	TREATMT FOR ALCOHOL DIS, SD	479	€312	0.057					0.5	0.5	0.5
V66Z	TREATMT FOR DRUG DIS, SD	71	€294	0.053					0.5	0.5	0.5
<b>MDC 21 - INJURIES, POISONING AND TOXIC EFFECTS OF DRUGS</b>											
W01A	VENT/TRACH/CRA PR FOR MT, MAJC	25	€165,456	2.450	2.700	0.498	30.103	0.311	73.4	56	90
W01B	VENT/TRACH/CRA PR FOR MT, INTC	32	€142,969	1.727	1.954	0.454	26.012	0.219	70.9	54	88
W01C	VENT/TRACH/CRA PR FOR MT, MINC	40	€50,993	1.149	1.627	0.956	9.278	0.301	26.4	9	43



DRG	DRG Description	Indicative Inpatient Cases	Inpatient Inlier Price	Same Day RV	One Day RV	Multi Low RV	Inlier RV	Multi High RV	Average Length of Stay	Lequiv (Low Boundary)	Lequiv (High Boundary)
W02A	HIP,FMR&LWR LMB PR FOR MT,MAJC	23	€58,111	3.335	3.446	0.223	10.573	0.111	50.4	33	67
W02B	HIP,FMR&LWR LMB PR FOR MT,MINC	77	€22,580	1.546	1.696	0.301	4.108	0.085	26.5	9	43
W03Z	ABDOMINAL PR MULT SIG TRAUMA	26	€22,582	1.281	1.685	0.808	4.109	0.099	18.7	4	36
W04A	MULT SIG TRAUMA+OTH OR PR,MAJC	21	€41,777	1.918	2.080	0.325	7.601	0.161	35.4	18	52
W04B	MULT SIG TRAUMA+OTH OR PR,MINC	38	€17,499	1.349	1.960		3.184	0.160	11.7	2	29
W60A	MULT SIG TRAUMA, D/TR<5D, MAJC	32	€14,531	0.897	2.644		2.644	0.093	2.0	1	7
W60B	MULT SIG TRAUMA, D/TR<5D, MINC	38	€8,754	0.696	1.593		1.593	0.326	2.1	1	7
W61A	MULT SIG TRAUMA -OR PR, MAJC	99	€24,687	0.125	0.315	0.380	4.492	0.123	29.4	12	46
W61B	MULT SIG TRAUMA -OR PR, MINC	143	€7,309	0.096	1.330		1.330	0.121	8.9	1	26
X02A	MVSCLR TT/SKN GR INJ HAND,MAJC	13	€17,515	1.540	3.187		3.187	0.328	8.5	1	26
X02B	MVSCLR TT/SKN GR INJ HAND,MINC	63	€6,307	0.638	1.148		1.148	0.194	1.7	1	6
X04A	OTH PR INJURIES LWR LIMB, MAJC	52	€27,936	0.935	1.089	0.307	5.083	0.136	31.0	14	48
X04B	OTH PR INJURIES LWR LIMB, MINC	194	€4,136	0.441	0.752		0.752	0.118	2.7	1	10
X05A	OTH PR FOR INJ TO HAND, MAJC	162	€5,397	0.611	0.982		0.982	0.247	2.3	1	8
X05B	OTH PR FOR INJ TO HAND, MINC	652	€3,222	0.228	0.586		0.586	0.137	0.8	0	2
X06A	OTH PR FOR OTH INJURIES, MAJC	114	€19,028	0.844	1.218	0.748	3.462	0.145	20.8	4	38
X06B	OTH PR FOR OTH INJURIES, INTC	178	€8,050	0.562	1.465		1.465	0.187	6.0	1	23
X06C	OTH PR FOR OTH INJURIES, MINC	718	€3,967	0.236	0.722		0.722	0.154	2.6	1	8
X07A	SKIN GRAFT, INJ EXCL HAND,MAJC	12	€31,959	1.304	1.426	0.244	5.815	0.179	35.8	19	53
X07B	SKIN GRAFT, INJ EXCL HAND,INTC	36	€13,613	0.871	1.406		2.477	0.159	11.9	2	29
X07C	SKIN GRAFT, INJ EXCL HAND,MINC	39	€7,152	0.563	1.301		1.301	0.129	6.7	1	24
X40A	INJ,POIS,TOX EF+VENT SUPP,MAJC	46	€21,189	0.188	1.410		3.855	0.138	16.5	2	34
X40B	INJ,POIS,TOX EF+VENT SUPP,MINC	70	€10,735	0.127	0.736		1.953	0.107	6.1	2	20
X60A	INJURIES, MAJC	1,205	€6,051	0.096	1.101		1.101	0.101	11.9	1	29
X60B	INJURIES, MINC	3,405	€1,890	0.095	0.344		0.344	0.085	2.2	1	6
X61A	ALLERGIC REACTIONS, MAJC	95	€3,083	0.103	0.561		0.561	0.160	2.4	1	9
X61B	ALLERGIC REACTIONS, MINC	327	€676	0.083	0.123		0.123	0.091	1.0	0	2
X62A	POISON/TOXIC EFF DRUGS, MAJC	1,178	€4,721	0.057	0.859		0.859	0.101	6.0	1	23
X62B	POISON/TOXIC EFF DRUGS, MINC	3,503	€1,692	0.045	0.308		0.308	0.104	2.1	1	6
X63A	SEQUELAE OF TREATMENT, MAJC	480	€6,352	0.118	1.156		1.156	0.144	7.3	1	24
X63B	SEQUELAE OF TREATMENT, MINC	1,254	€2,244	0.053	0.408		0.408	0.127	2.6	1	8
X64A	OTH INJ,POIS&TOXIC EFFCTS,MAJC	397	€6,708	0.084	1.221		1.221	0.110	12.8	1	30
X64B	OTH INJ,POIS&TOXIC EFFCTS,MINC	805	€1,490	0.060	0.271		0.271	0.164	2.5	1	8
<b>MDC 22 - BURNS</b>											
Y01Z	VENT/TRACH/OR PR SEV BURN	16	€132,528	4.894	5.341	0.894	24.112	0.565	39.3	22	56
Y02A	SKIN GRAFT OTHER BURNS, MAJC	31	€34,108	1.146	2.158	2.024	6.206	0.250	19.3	3	36

DRG	DRG Description	Indicative Inpatient Cases	Inpatient Inlier Price	Same Day RV	One Day RV	Multi Low RV	Inlier RV	Multi High RV	Average Length of Stay	Lequiv (Low Boundary)	Hequiv (High Boundary)
Y02B	SKIN GRAFT OTHER BURNS, INTC	63	€18,112	0.685	3.295		3.295	0.224	9.0	1	26
Y02C	SKIN GRAFT OTHER BURNS, MINC	20	€11,689	0.547	2.127		2.127	0.197	6.0	1	23
Y03A	OTH OR PR FOR OTHER BURNS,MAJC	29	€9,523	0.639	1.733		1.733	0.175	5.0	1	22
Y03B	OTH OR PR FOR OTHER BURNS,MINC	45	€8,741	0.406	1.590		1.590	0.210	4.4	1	21
Y60Z	BURNS, TR<5D	46	€2,463	0.216	0.448		0.448	0.503	1.1	1	3
Y61Z	SEVERE BURNS	68	€12,068	0.128	2.196		2.196	0.201	8.0	1	25
Y62A	OTHER BURNS, MAJC	63	€8,122	0.104	1.478		1.478	0.145	7.1	1	24
Y62B	OTHER BURNS, MINC	168	€3,232	0.097	0.588		0.588	0.170	2.3	1	9
<b>MDC 23 - FACTORS INFLUENCING HEALTH STATUS AND OTHER CONTACTS WITH HEALTH SERVICES</b>											
Z01A	OTH CNT HLTH SRV +OR PR, MAJC	77	€20,905	0.635	0.846	0.422	3.803	0.115	24.7	8	42
Z01B	OTH CNT HLTH SRV +OR PR, MINC	193	€5,796	0.297	1.055		1.055	0.131	2.5	1	8
Z40Z	OTH CONTACT HLTH SRV +ENDOSC,SD	25	€486	0.088					0.5	0.5	0.5
Z61A	SIGNS & SYMPTOMS, MAJC	645	€6,672	0.070	1.214		1.214	0.101	10.0	1	27
Z61B	SIGNS & SYMPTOMS, INTC	853	€3,549	0.069	0.646		0.646	0.100	5.1	1	20
Z61C	SIGNS & SYMPTOMS, MINC	1,301	€2,585	0.057	0.470		0.470	0.116	3.1	1	10
Z63A	OTH FLLW UP SURG/MED CARE,MAJC	920	€9,607	0.061	0.398	0.675	1.748	0.107	19.8	3	37
Z63B	OTH FLLW UP SURG/MED CARE,MINC	982	€3,265	0.063	0.594		0.594	0.116	3.8	1	13
Z64A	OTH FACTORS INFL HLTH ST, MAJC	751	€3,635	0.087	0.661		0.661	0.041	9.8	1	27
Z64B	OTH FACTORS INFL HLTH ST, MINC	1,236	€1,565	0.078	0.285		0.285	0.073	1.9	1	5
Z65Z	CONGNTL ANML&PROB FR NEO PERD	40	€7,813	0.112	1.422		1.422	0.344	4.6	1	20
Z66Z	SLEEP DISORDERS	169	€697	0.056	0.127		0.127	0.111	1.0	1	1

# DAYCASES



DRG	DRG Description	Indicative Day Cases	Day Case Price	Day Case RV
<b>UNRELATED OR DRGS</b>				
801B	OR PR UNREL TO PDX, INTC	36	€4,552	5.411
801C	OR PR UNREL TO PDX, MINC	193	€3,389	4.029
963Z	NEONATAL DX NOT CONSNT AGE/WGT	< 5	€399	0.475
<b>PRE MDC</b>				
A07B	ALLOGENEIC BMT, AGE>=17Y+MINC	< 5	€2,909	3.458
A08B	AUTOLOGOUS BMT, MINC	15	€2,260	2.686
A11A	INS IMPLNT SP INFUS DEV, MAJC	< 5	€14,203	16.885
A11B	INS IMPLNT SP INFUS DEV, MINC	< 5	€14,203	16.885
A12Z	INS NEUROSTIMULATOR DEV	62	€20,631	24.528
<b>MDC 01 - DISEASES AND DISORDERS OF THE NERVOUS SYSTEM</b>				
B02B	CRANIAL PROCEDURES, INTC	< 5	€9,555	11.360
B02C	CRANIAL PROCEDURES, MINC	14	€5,935	7.056
B03B	SPINAL PROCEDURES, INTC	9	€7,813	9.288
B03C	SPINAL PROCEDURES, MINC	15	€6,265	7.448
B05Z	CARPAL TUNNEL RELEASE	1,065	€1,461	1.737
B06A	CBL PSY,MUS DYSY,NPTHY PR,MAJC	5	€4,422	5.258
B06B	CBL PSY,MUS DYSY,NPTHY PR,INTC	6	€2,976	3.538
B06C	CBL PSY,MUS DYSY,NPTHY PR,MINC	170	€2,976	3.538
B07A	CRANL/PRPHL NERV&OTH PR, MAJC	< 5	€3,486	4.144
B07B	CRANL/PRPHL NERV&OTH PR, MINC	118	€2,564	3.048
B40Z	PLASMAPHERESIS + NEURO DIS, SD	73	€813	0.967
B41Z	TELEMETRIC EEG MONITORING	< 5	€491	0.583
B60B	ACUTE PARA/QUAD+/-OR PR, MINC	< 5	€5,581	6.635
B61A	SPINAL CORD COND+/-OR PR, MAJC	< 5	€4,377	5.204
B61B	SPINAL CORD COND+/-OR PR, MINC	15	€2,421	2.878
B62Z	APHERESIS	12	€1,246	1.482
B63A	DMNTIA&CHRNIC DIST CBL FN,MAJC	27	€368	0.437
B63B	DMNTIA&CHRNIC DIST CBL FN,MINC	122	€309	0.367
B64A	DELIRIUM, MAJC	< 5	€400	0.476
B64B	DELIRIUM, MINC	17	€400	0.476
B65A	CEREBRAL PALSY, MAJC	22	€960	1.142
B65B	CEREBRAL PALSY, MINC	201	€581	0.690
B66A	NERVOUS SYSTEM NEOPLASM, MAJC	65	€770	0.915
B66B	NERVOUS SYSTEM NEOPLASM, MINC	1,641	€514	0.611
B67A	DEGNRTV NERV SYS DIS, MAJC	55	€1,213	1.442
B67B	DEGNRTV NERV SYS DIS, INTC	433	€1,246	1.481
B67C	DEGNRTV NERV SYS DIS, MINC	839	€1,246	1.481
B68A	MLT SCLROSIS&CBL ATAXIA, MAJC	222	€2,036	2.421
B68B	MLT SCLROSIS&CBL ATAXIA, MINC	5,727	€1,731	2.058

DRG	DRG Description	Indicative Day Cases	Day Case Price	Day Case RV
B69B	TIA & PRECEREBRL OCCLUSN, MINC	26	€463	0.551
B70C	STROKE & OTH CEREB DIS, MINC	19	€539	0.641
B70D	STROKE & OTH CEREB DIS, TR<5D	12	€539	0.641
B71A	CRANIAL&PERIPHL NERV DIS, MAJC	1,180	€1,232	1.464
B71B	CRANIAL&PERIPHL NERV DIS, MINC	2,719	€1,232	1.464
B72A	NRVS SYS INF EX VRL MNGTS,MAJC	6	€883	1.050
B72B	NRVS SYS INF EX VRL MNGTS,MINC	121	€697	0.829
B73Z	VIRAL MENINGITIS	< 5	€571	0.678
B74A	NONTRAUMATIC STUPOR&COMA, MAJC	< 5	€407	0.484
B74B	NONTRAUMATIC STUPOR&COMA, MINC	12	€407	0.484
B75Z	FEBRILE CONVULSIONS	25	€1,033	1.228
B76A	SEIZURES, MAJC	37	€616	0.732
B76B	SEIZURES, MINC	739	€452	0.537
B77A	HEADACHES, MAJC	78	€515	0.613
B77B	HEADACHES, MINC	1,163	€485	0.576
B78B	INTRACRANIAL INJURIES, MINC	< 5	€361	0.429
B80B	OTHER HEAD INJURIES, MINC	< 5	€636	0.756
B81A	OTHER DIS OF NERVOUS SYS, MAJC	28	€458	0.545
B81B	OTHER DIS OF NERVOUS SYS, MINC	2,267	€318	0.378
B82B	CHR&UNSP PARA/QUAD+/-PR, INTC	6	€1,711	2.034
B82C	CHR&UNSP PARA/QUAD+/-PR, MINC	80	€1,022	1.216
<b>MDC 02 - DISEASES AND DISORDERS OF THE EYE</b>				
C01A	PR FOR PENETRRTNG EYE INJ, MAJC	< 5	€7,486	8.900
C01B	PR FOR PENETRRTNG EYE INJ, MINC	7	€4,809	5.717
C02Z	ENUCLEATIONS & ORBITAL PROCS	24	€4,295	5.107
C03A	RETINAL PROCEDURES, MAJC	3,151	€914	1.086
C03B	RETINAL PROCEDURES, MINC	30,492	€673	0.800
C04A	MJR CORN,SCLERL&CNJNCT PR,MAJC	5	€5,356	6.368
C04B	MJR CORN,SCLERL&CNJNCT PR,MINC	17	€4,483	5.330
C05Z	DACRYOCYSTORHINOSTOMY	38	€4,220	5.017
C10Z	STRABISMUS PROCEDURES	481	€2,692	3.200
C11Z	EYELID PROCEDURES	785	€2,135	2.538
C12Z	OTHER CORN, SCLERAL&CONJNCT PR	351	€2,026	2.408
C13Z	LACRIMAL PROCEDURES	238	€1,011	1.202
C14A	OTHER EYE PROCEDURES, MAJC	66	€1,541	1.832
C14B	OTHER EYE PROCEDURES, MINC	1,007	€1,325	1.575
C15Z	GLAUCOMA/CMPLX CATARACT PROCS	631	€1,723	2.048
C16Z	LENS PROCEDURES	6,683	€1,312	1.560
C60A	AC & MJR EYE INFECTIONS, MAJC	< 5	€1,063	1.263
C60B	AC & MJR EYE INFECTIONS, MINC	25	€1,024	1.217
C61A	NEURO & VASCLR DIS EYE, MAJC	208	€466	0.554
C61B	NEURO & VASCLR DIS EYE, MINC	602	€466	0.554

DRG	DRG Description	Indicative Day Cases	Day Case Price	Day Case RV
C62A	HYPH & MED M TRAUMA EYE, MAJC	16	€515	0.613
C62B	HYPH & MED M TRAUMA EYE, MINC	40	€488	0.580
C63A	OTH DIS OF THE EYE, MAJC	151	€461	0.548
C63B	OTH DIS OF THE EYE, INTC	1,886	€335	0.398
C63C	OTH DIS OF THE EYE, MINC	3,251	€201	0.239
<b>MDC 03 - DISEASES AND DISORDERS OF THE EAR, NOSE, MOUTH AND THROAT</b>				
D01Z	COCHLEAR IMPLANT	< 5	€48,535	57.704
D02A	HEAD & NECK PROCEDURES, MAJC	< 5	€12,720	15.122
D02B	HEAD & NECK PROCEDURES, INTC	5	€9,248	10.995
D02C	HEAD & NECK PROCEDURES, MINC	22	€6,069	7.216
D03Z	SURGICAL REPR CLEFT LIP/PALATE	20	€7,583	9.015
D04A	MAXILLO SURGERY, MAJC	20	€6,085	7.235
D04B	MAXILLO SURGERY, MINC	17	€3,874	4.606
D05Z	PAROTID GLAND PROCEDURES	< 5	€9,273	11.025
D06Z	SINUS & COMPLEX MIDDLE EAR PR	336	€5,242	6.233
D10Z	NASAL PROCEDURES	426	€3,917	4.657
D11Z	TONSILLECTOMY, ADENOIDECTOMY	367	€2,376	2.825
D12A	OTH EAR,NOSE,MTH&THRT PR, MAJC	43	€3,401	4.044
D12B	OTH EAR,NOSE,MTH&THRT PR, MINC	937	€2,474	2.941
D13Z	MYRINGOTOMY + TUBE INSERTION	927	€1,512	1.797
D14A	MOUTH&SALIVRY GLAND PR, MAJC	203	€2,653	3.154
D14B	MOUTH&SALIVRY GLAND PR, MINC	439	€1,353	1.609
D15Z	MASTOID PROCEDURES	9	€10,082	11.986
D40Z	DENTAL EXTRACT & RESTORATIONS	2,748	€1,751	2.082
D60A	EAR,NOSE,MTH&THRT MALIG, MAJC	11	€1,835	2.182
D60B	EAR,NOSE,MTH&THRT MALIG, MINC	920	€806	0.958
D61A	DYSEQUILIBRIUM, MAJC	15	€498	0.592
D61B	DYSEQUILIBRIUM, MINC	449	€422	0.502
D62A	EPISTAXIS, MAJC	< 5	€522	0.621
D62B	EPISTAXIS, MINC	433	€429	0.511
D63A	OTITIS MEDIA&UPP RESP INF,MAJC	184	€577	0.686
D63B	OTITIS MEDIA&UPP RESP INF,MINC	973	€305	0.363
D64A	LARYNGOTRTIS&EPIGLOTTITIS,MAJC	< 5	€1,480	1.759
D64B	LARYNGOTRTIS&EPIGLOTTITIS,MINC	20	€1,036	1.231
D65A	NASAL TRAUMA & DEFORMITY, MAJC	5	€713	0.848
D65B	NASAL TRAUMA & DEFORMITY, MINC	552	€460	0.546
D66A	OTH EAR,NOSE,MTH&THRT DIS,MAJC	419	€528	0.628
D66B	OTH EAR,NOSE,MTH&THRT DIS,MINC	5,167	€337	0.401
D67A	ORAL & DENTAL DISORDERS, MAJC	41	€790	0.939
D67B	ORAL & DENTAL DISORDERS, MINC	805	€771	0.917

DRG	DRG Description	Indicative Day Cases	Day Case Price	Day Case RV
<b>MDC 04 - DISEASES AND DISORDERS OF THE RESPIRATORY SYSTEM</b>				
E01B	MAJOR CHEST PROCEDURES, INTC	< 5	€7,489	8.903
E01C	MAJOR CHEST PROCEDURES, MINC	21	€7,489	8.903
E02A	OTHER RESPIRATORY SYS PR, MAJC	< 5	€3,998	4.753
E02B	OTHER RESPIRATORY SYS PR, INTC	105	€2,326	2.765
E02C	OTHER RESPIRATORY SYS PR, MINC	85	€1,399	1.663
E42A	BRONCHOSCOPY, MAJC	285	€1,081	1.285
E42B	BRONCHOSCOPY, MINC	4,682	€1,007	1.197
E60A	CYSTIC FIBROSIS, MAJC	26	€752	0.894
E60B	CYSTIC FIBROSIS, MINC	1,787	€666	0.792
E61A	PULMONARY EMBOLISM, MAJC	< 5	€589	0.700
E61B	PULMONARY EMBOLISM, MINC	21	€461	0.549
E62A	RESPIR INFECTN/INFLAMM, MAJC	22	€542	0.645
E62B	RESPIR INFECTN/INFLAMM, MINC	49	€421	0.500
E63A	SLEEP APNOEA, MAJC	5	€578	0.687
E63B	SLEEP APNOEA, MINC	54	€569	0.676
E64B	PULM OEDEMA & RESP FAIL, MINC	< 5	€425	0.505
E65A	CHORNIC OBSTR AIRWAY DIS, MAJC	50	€593	0.706
E65B	CHORNIC OBSTR AIRWAY DIS, MINC	628	€545	0.648
E66B	MAJOR CHEST TRAUMA, MINC	< 5	€323	0.384
E67A	RESP SIGNS & SYMPTOMS, MAJC	144	€1,311	1.559
E67B	RESP SIGNS & SYMPTOMS, MINC	957	€1,154	1.372
E68A	PNEUMOTHORAX, MAJC	< 5	€527	0.626
E68B	PNEUMOTHORAX, MINC	< 5	€442	0.525
E69A	BRONCHITIS & ASTHMA, MAJC	40	€1,292	1.536
E69B	BRONCHITIS & ASTHMA, MINC	4,161	€1,273	1.513
E70A	WHOOPNG CGH&ACTE BRNCHIO, MAJC	< 5	€1,352	1.607
E70B	WHOOPNG CGH&ACTE BRNCHIO, MINC	9	€612	0.728
E71A	RESPIRATORY NEOPLASMS, MAJC	35	€874	1.039
E71B	RESPIRATORY NEOPLASMS, MINC	2,366	€821	0.976
E72Z	RESP PROBS FROM NEONATL PERIOD	< 5	€1,770	2.105
E73A	PLEURAL EFFUSION, MAJC	< 5	€571	0.679
E73B	PLEURAL EFFUSION, INTC	26	€541	0.643
E73C	PLEURAL EFFUSION, MINC	67	€509	0.605
E74A	INTERSTITIAL LUNG DIS, MAJC	93	€1,184	1.408
E74B	INTERSTITIAL LUNG DIS, MINC	688	€1,173	1.395
E75A	OTHER RESP SYS DIS, MAJC	43	€538	0.640

DRG	DRG Description	Indicative Day Cases	Day Case Price	Day Case RV
E75B	OTHER RESP SYS DIS, MINC	504	€523	0.621
E76A	RESPIRATORY TUBERCULOSIS, MAJC	< 5	€542	0.645
E76B	RESPIRATORY TUBERCULOSIS, MINC	33	€352	0.419
<b>MCD 05 - DISEASES AND DISORDERS OF THE CIRCULATORY SYSTEM</b>				
F01A	IMPL/REPL AICD, TOT SYS, MAJC	< 5	€22,731	27.024
F01B	IMPL/REPL AICD, TOT SYS, MINC	229	€19,529	23.218
F02Z	OTHER AICD PROCEDURES	7	€6,613	7.862
F04C	CRD VLV PR+PMP-INV INVES, MINC	< 5	€15,180	18.047
F08C	MJR RECNSTR VASC PR-PUMP, MINC	14	€13,350	15.871
F09A	OTH CARDIOTHR PR-CPB PMP, MAJC	< 5	€9,375	11.146
F09B	OTH CARDIOTHR PR-CPB PMP, INTC	< 5	€6,726	7.996
F09C	OTH CARDIOTHR PR-CPB PMP, MINC	11	€6,068	7.214
F10B	INTERVENT CRNRY PR + AMI, MINC	64	€4,038	4.801
F12A	IMPL/REPL PM, TOT SYS, MAJC	5	€9,079	10.794
F12B	IMPL/REPL PM, TOT SYS, MINC	381	€6,367	7.570
F13B	AMP CIRC DIS,UPP LMB&TOE, MINC	< 5	€4,537	5.394
F14A	VASC PR-MJR RECONSTR-PMP, MAJC	15	€6,794	8.078
F14B	VASC PR-MJR RECONSTR-PMP, INTC	13	€5,245	6.236
F14C	VASC PR-MJR RECONSTR-PMP, MINC	144	€3,415	4.061
F15A	INTERV CRNRY PR-AMI+STNT, MAJC	7	€4,369	5.194
F15B	INTERV CRNRY PR-AMI+STNT, MINC	624	€4,140	4.922
F16A	INTERV CRNRY PR-AMI-STNT, MAJC	< 5	€3,428	4.075
F16B	INTERV CRNRY PR-AMI-STNT, MINC	36	€3,428	4.075
F17A	INSERT/REPLACE PACEM GEN, MAJC	5	€7,715	9.172
F17B	INSERT/REPLACE PACEM GEN, MINC	258	€4,769	5.669
F18A	OTHER PACEMAKER PR, MAJC	< 5	€6,933	8.243
F18B	OTHER PACEMAKER PR, MINC	19	€3,777	4.490
F19A	TRNS-VSCLR PERC CRDC INT, MAJC	24	€7,966	9.471
F19B	TRNS-VSCLR PERC CRDC INT, MINC	104	€7,495	8.911
F20Z	VEIN LIGATION & STRIPPING	2,201	€2,196	2.611
F21B	OTH CIRCULATORY SYS PR, INTC	11	€3,623	4.307
F21C	OTH CIRCULATORY SYS PR, MINC	18	€3,015	3.584
F41A	CRC DSRD+AMI+INVA INV PR, MAJC	< 5	€1,762	2.094
F41B	CRC DSRD+AMI+INVA INV PR, MINC	41	€1,762	2.094
F42A	CIRC DIS-AMI+INVA INV PR, MAJC	212	€1,738	2.067
F42B	CIRC DIS-AMI+INVA INV PR, MINC	5,727	€1,738	2.067
F60A	CIRC DIS+AMI-INVA INV PR	< 5	€634	0.753
F60B	CIRC DIS+AMI-INVA INV PR,T<5D	< 5	€552	0.656
F61A	INFECTIVE ENDOCARDITIS, MAJC	6	€831	0.988
F61B	INFECTIVE ENDOCARDITIS, MINC	22	€831	0.988



DRG	DRG Description	Indicative Day Cases	Day Case Price	Day Case RV
F62A	HEART FAILURE & SHOCK, MAJC	< 5	€464	0.552
F62B	HEART FAILURE & SHOCK, MINC	217	€451	0.536
F62C	HEART FAILURE & SHOCK, TR<5D	6	€451	0.536
F63A	VENOUS THROMBOSIS, MAJC	< 5	€457	0.544
F63B	VENOUS THROMBOSIS, MINC	72	€382	0.454
F64A	SKN ULCERS IN CIRC DIS, MAJC	0	€620	0.737
F64B	SKN ULCERS IN CIRC DIS, INTC	46	€591	0.703
F64C	SKN ULCERS IN CIRC DIS, MINC	< 5	€446	0.531
F65A	PERIPHERAL VASCULAR DIS, MAJC	28	€1,052	1.250
F65B	PERIPHERAL VASCULAR DIS, MINC	797	€925	1.100
F66A	CORONARY ATHEROSCLEROSIS, MAJC	15	€676	0.804
F66B	CORONARY ATHEROSCLEROSIS, MINC	368	€674	0.801
F67A	HYPERTENSION, MAJC	< 5	€496	0.590
F67B	HYPERTENSION, MINC	72	€386	0.459
F68A	CONGENITAL HEART DISEASE, MAJC	216	€875	1.040
F68B	CONGENITAL HEART DISEASE, MINC	371	€766	0.910
F69A	VALVULAR DISORDERS, MAJC	29	€1,206	1.433
F69B	VALVULAR DISORDERS, MINC	517	€1,206	1.433
F72B	UNSTABLE ANGINA, MINC	10	€428	0.508
F73A	SYNCOPE & COLLAPSE, MAJC	42	€667	0.793
F73B	SYNCOPE & COLLAPSE, MINC	1,724	€481	0.572
F74A	CHEST PAIN, MAJC	35	€513	0.610
F74B	CHEST PAIN, MINC	434	€497	0.591
F75A	OTHER CIRCULATORY DIS, MAJC	< 5	€1,130	1.344
F75B	OTHER CIRCULATORY DIS, INTC	23	€1,054	1.253
F75C	OTHER CIRCULATORY DIS, MINC	568	€1,051	1.249
F76A	ARRHY,CARD ARRST&COND DIS,MAJC	47	€790	0.939
F76B	ARRHY,CARD ARRST&COND DIS,MINC	1,568	€790	0.939
<b>MDC 06 - DISEASES AND DISORDERS OF THE DIGESTIVE SYSTEM</b>				
G01C	RECTAL RESECTION, MINC	< 5	€13,293	15.804
G02C	MJR SMALL&LARGE BOWEL PR, MINC	42	€8,951	10.642
G03A	STOMCH,OESH PGL&DUODNL PR, MAJC	< 5	€13,822	16.433
G03B	STOMCH,OESH PGL&DUODNL PR, INTC	11	€12,009	14.277
G03C	STOMCH,OESH PGL&DUODNL PR, MINC	39	€6,826	8.116
G04B	PERITONEAL ADHESOLYSIS, INTC	< 5	€6,806	8.091
G04C	PERITONEAL ADHESOLYSIS, MINC	60	€6,192	7.362
G05B	MNR SMALL&LARGE BOWEL PR, MINC	6	€6,147	7.309
G07A	APPENDICECTOMY, MAJC	< 5	€4,879	5.801
G07B	APPENDICECTOMY, MINC	41	€4,879	5.801
G10A	HERNIA PROCEDURES, MAJC	31	€6,574	7.816

DRG	DRG Description	Indicative Day Cases	Day Case Price	Day Case RV
G10B	HERNIA PROCEDURES, MINC	2,032	€4,497	5.347
G11A	ANAL & STOMAL PROCEDURES, MAJC	42	€4,243	5.045
G11B	ANAL & STOMAL PROCEDURES, MINC	928	€2,549	3.030
G12B	OTH DIGESTIVE SYS OR PR, INTC	11	€3,022	3.592
G12C	OTH DIGESTIVE SYS OR PR, MINC	223	€2,864	3.405
G46A	COMPLEX ENDOSCOPY, MAJC	500	€1,536	1.826
G46B	COMPLEX ENDOSCOPY, MINC	9,068	€1,144	1.360
G47A	GASTROSCOPY, MAJC	146	€960	1.141
G47B	GASTROSCOPY, INTC	1,751	€913	1.085
G47C	GASTROSCOPY, MINC	25,497	€635	0.755
G48A	COLONOSCOPY, MAJC	1,887	€1,033	1.229
G48B	COLONOSCOPY, MINC	36,952	€896	1.065
G60A	DIGESTIVE MALIGNANCY, MAJC	218	€897	1.066
G60B	DIGESTIVE MALIGNANCY, MINC	2,197	€845	1.004
G61A	GASTROINT HAEMORRHAGE, MAJC	11	€488	0.581
G61B	GASTROINT HAEMORRHAGE, MINC	384	€488	0.581
G64A	INFLAM BOWEL DISEASE, MAJC	210	€2,933	3.487
G64B	INFLAM BOWEL DISEASE, MINC	20,203	€2,332	2.772
G65A	GASTROINT OBSTRUCTION, MAJC	< 5	€535	0.636
G65B	GASTROINT OBSTRUCTION, MINC	13	€532	0.632
G66A	ABDMNL PAIN/MESENT ADNTS, MAJC	107	€630	0.749
G66B	ABDMNL PAIN/MESENT ADNTS, MINC	588	€580	0.690
G67A	OESOPHS & GASTROENTS, MAJC	52	€568	0.676
G67B	OESOPHS & GASTROENTS, MINC	630	€511	0.607
G70A	OTHER DIGESTIVE SYS DIS, MAJC	865	€827	0.983
G70B	OTHER DIGESTIVE SYS DIS, MINC	3,558	€758	0.901
<b>MDC 07 - DISEASES AND DISORDERS OF THE HEPATOBILIARY SYSTEM AND PANCREAS</b>				
H01B	PANCREAS,LIVER&SHUNT PR, INTC	< 5	€14,551	17.300
H01C	PANCREAS,LIVER&SHUNT PR, MINC	12	€7,720	9.178
H02A	MJR BILIARY TRACT PR, MAJC	< 5	€6,023	7.161
H02B	MJR BILIARY TRACT PR, MINC	36	€3,679	4.374
H05A	HEPATOBILIARY DIAG PR, MAJC	5	€6,442	7.659
H05B	HEPATOBILIARY DIAG PR, MINC	58	€2,425	2.884
H06B	OTH HEPTOBILRY&PANCRS PR, INTC	10	€1,830	2.176
H06C	OTH HEPTOBILRY&PANCRS PR, MINC	12	€967	1.150
H07C	OPEN CHOLECYSTECTOMY, MINC	23	€7,694	9.147
H08A	LAP CHOLECYSTECTOMY, MAJC	17	€6,958	8.273
H08B	LAP CHOLECYSTECTOMY, MINC	1,034	€6,769	8.047
H40C	ENDO PR BLEED OES VARICES,MINC	30	€1,310	1.557
H43A	ERCP PROCEDURES, MAJC	8	€1,771	2.106

DRG	DRG Description	Indicative Day Cases	Day Case Price	Day Case RV
H43B	ERCP PROCEDURES, INTC	226	€1,573	1.871
H43C	ERCP PROCEDURES, MINC	1,742	€1,484	1.764
H60B	CIRRHOSIS&ALC HEPATITIS, INTC	151	€579	0.689
H60C	CIRRHOSIS&ALC HEPATITIS, MINC	132	€403	0.479
H61A	MALG HEPATOBIL SYS&PANCR, MAJC	22	€884	1.051
H61B	MALG HEPATOBIL SYS&PANCR, MINC	797	€851	1.012
H62B	PANCREAS DIS -MALIG, MINC	357	€739	0.879
H63A	OTH DISORDERS OF LIVER, MAJC	12	€680	0.809
H63B	OTH DISORDERS OF LIVER, INTC	394	€680	0.809
H63C	OTH DISORDERS OF LIVER, MINC	1,387	€515	0.612
H64A	BILIARY TRACT DISORDERS, MAJC	86	€706	0.840
H64B	BILIARY TRACT DISORDERS, MINC	518	€705	0.838
<b>MDC 08 - DISEASES AND DISORDERS OF THE MUSCULOSKELETAL SYSTEM &amp; CONNECTIVE TISSUE</b>				
I02B	MCRVAS TT/SKIN GRAFT-HAND,INTC	8	€13,511	16.063
I02C	MCRVAS TT/SKIN GRAFT-HAND,MINC	19	€9,752	11.594
I03B	HIP REPLACEMENT, MINC	28	€5,347	6.357
I04B	KNEE REPLACEMENT, MINC	< 5	€9,796	11.646
I05A	OTHER JOINT REPLACEMENT, MAJC	< 5	€9,520	11.319
I05B	OTHER JOINT REPLACEMENT, MINC	< 5	€9,520	11.319
I06Z	SPINAL FUSION FOR DEFORMITY	28	€20,626	24.523
I08A	OTHER HIP & FEMUR PR, MAJC	< 5	€8,494	10.099
I08B	OTHER HIP & FEMUR PR, MINC	46	€5,029	5.980
I09B	SPINAL FUSION, INTC	< 5	€11,621	13.816
I09C	SPINAL FUSION, MINC	6	€11,621	13.816
I10A	OTHER BACK & NECK PR, MAJC	< 5	€5,924	7.043
I10B	OTHER BACK & NECK PR, MINC	796	€4,888	5.811
I11Z	LIMB LENGTHENING PROCEDURES	< 5	€7,534	8.957
I12B	MISC PR INFC/INFM BNE/JNT,INTC	9	€6,193	7.363
I12C	MISC PR INFC/INFM BNE/JNT,MINC	81	€3,774	4.487
I13A	HUMER,TIBIA,FIBUL,ANKL PR,MAJC	< 5	€7,294	8.672
I13B	HUMER,TIBIA,FIBUL,ANKL PR,MINC	310	€4,966	5.904
I16Z	OTHER SHOULDER PROCEDURES	208	€5,103	6.067
I17A	MAXILLO-FACIAL SURGERY, MAJC	< 5	€8,021	9.536
I17B	MAXILLO-FACIAL SURGERY, MINC	< 5	€4,690	5.576
I18A	OTHER KNEE PROCEDURES, MAJC	38	€4,825	5.737
I18B	OTHER KNEE PROCEDURES, MINC	883	€3,391	4.031
I19A	OTHER ELBOW & FOREARM PR, MAJC	< 5	€6,290	7.478
I19B	OTHER ELBOW & FOREARM PR, MINC	529	€4,506	5.358
I20A	OTHER FOOT PROCEDURES, MAJC	9	€5,166	6.141
I20B	OTHER FOOT PROCEDURES, MINC	294	€4,209	5.004

DRG	DRG Description	Indicative Day Cases	Day Case Price	Day Case RV
I21Z	LOC EX&REM INT FIX DEV HP&FMR	46	€3,610	4.292
I23A	LOC EX&REM INT DEV-HP&FMR,MAJC	87	€3,612	4.294
I23B	LOC EX&REM INT DEV-HP&FMR,MINC	1,335	€2,236	2.659
I24A	ARTHROSCOPY, MAJC	20	€4,222	5.020
I24B	ARTHROSCOPY, MINC	215	€2,824	3.357
I25A	BONE&JNT DIAG PR INC BIOP,MAJC	20	€1,620	1.925
I25B	BONE&JNT DIAG PR INC BIOP,MINC	131	€1,224	1.455
I27A	SOFT TISSUE PROCEDURES, MAJC	14	€5,781	6.873
I27B	SOFT TISSUE PROCEDURES, MINC	490	€2,515	2.990
I28A	OTH MUSCULOSKELETAL PR, MAJC	< 5	€5,072	6.030
I28B	OTH MUSCULOSKELETAL PR, INTC	133	€4,884	5.806
I28C	OTH MUSCULOSKELETAL PR, MINC	109	€2,531	3.009
I29Z	KNEE RECONSTRUCTION/REVISION	56	€7,494	8.910
I30Z	HAND PROCEDURES	1,677	€3,357	3.991
I40Z	INFUSION FOR MUSCLSKLT DIS, SD	26,367	€1,167	1.388
I81Z	MUSCULOSKELETAL INJURIES, SD	681	€1,131	1.345
I82Z	OTH SD TREATMT, MUSCLSKL DIS	11,004	€688	0.818
<b>MDC 09 - DISEASES AND DISORDERS OF THE SKIN, SUBCUTANEOUS TISSUE AND BREAST</b>				
J01B	MICRVS TSS TRNS SKN/BRST, MINC	< 5	€15,702	18.668
J06A	MAJOR PR FOR BREAST DIS, MAJC	19	€5,816	6.914
J06B	MAJOR PR FOR BREAST DIS, MINC	743	€4,997	5.941
J07A	MINOR PR FOR BREAST DIS, MAJC	640	€2,911	3.461
J07B	MINOR PR FOR BREAST DIS, MINC	920	€2,646	3.146
J08A	OTH SKN GRF& DBRDMNT PR, MAJC	< 5	€6,467	7.689
J08B	OTH SKN GRF& DBRDMNT PR, INTC	26	€4,225	5.023
J08C	OTH SKN GRF& DBRDMNT PR, MINC	1,100	€1,951	2.319
J09Z	PERIANAL & PILONIDAL PROCS	305	€3,397	4.038
J10A	SKN,TIS&BRST PLASTIC PR, MAJC	84	€3,982	4.735
J10B	SKN,TIS&BRST PLASTIC PR, MINC	840	€1,992	2.368
J11A	OTH SKN,SUBC TIS&BRST PR, MAJC	1,099	€1,375	1.635
J11B	OTH SKN,SUBC TIS&BRST PR, MINC	24,969	€757	0.900
J12B	LWR LMB PR +ULC/CEL, MINC	40	€3,698	4.397
J13A	LWR LMB PR -ULC/CEL, MAJC	10	€4,642	5.519
J13B	LWR LMB PR -ULC/CEL, MINC	145	€2,948	3.505
J14Z	MAJOR BREAST RECONSTRUCTIONS	32	€17,929	21.316
J60A	SKIN ULCERS, MAJC	< 5	€493	0.586
J60B	SKIN ULCERS, INTC	8	€419	0.498
J60C	SKIN ULCERS, MINC	565	€110	0.131
J62A	MALIGNANT BREAST DIS, MAJC	43	€913	1.086
J62B	MALIGNANT BREAST DIS, MINC	4,978	€719	0.855

DRG	DRG Description	Indicative Day Cases	Day Case Price	Day Case RV
J63A	NON-MALIGNANT BREAST DIS, MAJC	188	€570	0.678
J63B	NON-MALIGNANT BREAST DIS, MINC	3,197	€537	0.639
J64A	CELLULITIS, MAJC	13	€608	0.723
J64B	CELLULITIS, MINC	432	€502	0.597
J65A	TRAUMA TO SKN,SUB TIS&BST,MAJC	< 5	€530	0.630
J65B	TRAUMA TO SKN,SUB TIS&BST,MINC	52	€530	0.630
J67A	MINOR SKIN DISORDERS, MAJC	415	€613	0.728
J67B	MINOR SKIN DISORDERS, MINC	9,507	€604	0.719
J68A	MAJOR SKIN DISORDERS, MAJC	596	€856	1.018
J68B	MAJOR SKIN DISORDERS, MINC	989	€329	0.391
J69A	SKIN MALIGNANCY, MAJC	33	€1,385	1.647
J69B	SKIN MALIGNANCY, INTC	488	€961	1.143
J69C	SKIN MALIGNANCY, MINC	1,909	€543	0.646
J98Z	UV THERAPY	11,392	€134	0.160
<b>MDC 10 - ENDOCRINE, NUTRITIONAL AND METABOLIC DISEASES AND DISORDERS</b>				
K01C	OR PR FOR DIABETIC COMPL, MINC	< 5	€4,435	5.272
K02B	PITUITARY PROCEDURES, MINC	< 5	€7,890	9.380
K05A	PARATHYROID PROCEDURES, MAJC	< 5	€6,401	7.611
K05B	PARATHYROID PROCEDURES, MINC	20	€6,401	7.611
K06B	THYROID PROCEDURES, MINC	21	€7,482	8.896
K08Z	THYROGLOSSAL PROCEDURES	< 5	€3,950	4.696
K09A	OTH ENDCRN,NUTR&METAB PR, MAJC	< 5	€6,200	7.372
K09B	OTH ENDCRN,NUTR&METAB PR, MINC	23	€4,050	4.815
K10A	REV & OPEN BARIATRIC PR, MAJC	< 5	€9,810	11.663
K12A	OTHER BARIATRIC PROCS, MAJC	< 5	€5,542	6.589
K12B	OTHER BARIATRIC PROCS, MINC	< 5	€5,542	6.589
K13Z	PLAS OR PROC - END,NUT,MET DIS	7	€7,260	8.632
K40A	ENDO&INVEST PR METAB DIS, MAJC	25	€1,045	1.243
K40B	ENDO&INVEST PR METAB DIS, MINC	838	€956	1.137
K60A	DIABETES, MAJC	< 5	€597	0.710
K60B	DIABETES, MINC	108	€250	0.297
K61A	SEV NUTRIT DISTURBANCE, MAJC	0	€468	0.556
K61B	SEV NUTRIT DISTURBANCE, MINC	< 5	€460	0.547
K62A	MISC METABOLIC DISORDERS, MAJC	28	€582	0.692
K62B	MISC METABOLIC DISORDERS, INTC	100	€575	0.683
K62C	MISC METABOLIC DISORDERS, MINC	1,669	€575	0.683
K63A	INBORN ERR OF METABOLISM, MAJC	243	€1,150	1.367
K63B	INBORN ERR OF METABOLISM, MINC	204	€597	0.709
K64A	ENDOCRINE DISORDERS, MAJC	639	€494	0.587
K64B	ENDOCRINE DISORDERS, MINC	2,062	€441	0.524

DRG	DRG Description	Indicative Day Cases	Day Case Price	Day Case RV
<b>MDC 11 - DISEASES AND DISORDERS OF THE KIDNEY AND URINARY TRACT</b>				
L02B	OP INS PERI CTH DIALYSIS, MINC	44	€2,194	2.608
L03B	KDNY,URT&MJR BLDR PR NPSM,INTC	< 5	€10,267	12.206
L03C	KDNY,URT&MJR BLDR PR NPSM,MINC	9	€10,267	12.206
L04A	KDY,URT&MJR BLDR PR N-NPM,MAJC	< 5	€4,621	5.494
L04B	KDY,URT&MJR BLDR PR N-NPM,INTC	42	€4,097	4.870
L04C	KDY,URT&MJR BLDR PR N-NPM,MINC	714	€3,591	4.270
L06B	MINOR BLADDER PROCEDURES, INTC	< 5	€3,493	4.153
L06C	MINOR BLADDER PROCEDURES, MINC	101	€2,454	2.917
L07A	OTH TRANSURETHRAL PROCS, MAJC	12	€3,210	3.816
L07B	OTH TRANSURETHRAL PROCS, MINC	500	€2,255	2.681
L08A	URETHRAL PROCEDURES, MAJC	< 5	€4,550	5.410
L08B	URETHRAL PROCEDURES, MINC	44	€3,772	4.484
L09B	OTH PR KIDNY&URNRY TR DIS,INTC	6	€4,146	4.929
L09C	OTH PR KIDNY&URNRY TR DIS,MINC	220	€4,146	4.929
L40Z	URETEROSCOPY	39	€2,051	2.439
L41Z	CYSTOURETHROSCOPY URI DIS, SD	8,435	€549	0.652
L42Z	ESW LITHOTRIPSY	1,049	€567	0.674
L60A	KIDNEY FAILURE, MAJC	< 5	€919	1.093
L60B	KIDNEY FAILURE, INTC	70	€919	1.093
L60C	KIDNEY FAILURE, MINC	551	€905	1.076
L61Z	HAEMODIALYSIS	179,667	€534	0.635
L62A	KDNY&UNRY TR NEOPLASMS, MAJC	19	€939	1.117
L62B	KDNY&UNRY TR NEOPLASMS, MINC	862	€722	0.858
L63A	KDNY&UNRY TR INFECTIONS, MAJC	33	€522	0.620
L63B	KDNY&UNRY TR INFECTIONS, MINC	993	€321	0.381
L64A	URINARY STONES & OBSTR, MAJC	62	€1,188	1.413
L64B	URINARY STONES & OBSTR, MINC	151	€549	0.653
L65A	KDNY&UNRY TR SGNS&SYMP, MAJC	23	€562	0.669
L65B	KDNY&UNRY TR SGNS&SYMP, MINC	1,334	€210	0.250
L66Z	URETHRAL STRICTURE	145	€500	0.594
L67A	OTH KIDNY&URNRY TRCT DIS, MAJC	313	€743	0.884
L67B	OTH KIDNY&URNRY TRCT DIS, INTC	1,585	€619	0.736
L67C	OTH KIDNY&URNRY TRCT DIS, MINC	3,162	€358	0.426
L68Z	PERITONEAL DIALYSIS	< 5	€1,265	1.504
<b>MDC 12 - DISEASES AND DISORDERS OF THE MALE REPRODUCTIVE SYSTEM</b>				
M01B	MAJOR MALE PELVIC PROCS, MINC	< 5	€10,566	12.562
M02B	TRANSURTH PROSTM,REP DIS,MINC	< 5	€4,100	4.875
M03A	PENIS PROCEDURES, MAJC	13	€4,892	5.816
M03B	PENIS PROCEDURES, MINC	254	€2,937	3.491
M04Z	TESTES PROCEDURES	779	€3,353	3.986

DRG	DRG Description	Indicative Day Cases	Day Case Price	Day Case RV
M05Z	CIRCUMCISION	1,036	€2,534	3.013
M06A	OTH MALE REPROD SYS OR PR,MAJC	39	€2,224	2.644
M06B	OTH MALE REPROD SYS OR PR,MINC	58	€2,224	2.644
M40Z	CYSTURTHRSCPY,MALE REPR DIS,SD	1,044	€383	0.456
M60A	MALE REPR SYS MALIG, MAJC	334	€912	1.084
M60B	MALE REPR SYS MALIG, MINC	3,527	€895	1.064
M61A	BENIGN PROSTATIC HYPERTR, MAJC	10	€691	0.822
M61B	BENIGN PROSTATIC HYPERTR, MINC	797	€295	0.350
M62A	MALE REPROD SYS INFLAMM, MAJC	< 5	€864	1.027
M62B	MALE REPROD SYS INFLAMM, MINC	192	€469	0.557
M63Z	MALE STERILISATION PROCS	101	€2,111	2.509
M64A	OTHER MALE REPROD SYS DIS,MAJC	20	€1,098	1.305
M64B	OTHER MALE REPROD SYS DIS,MINC	771	€1,060	1.260
<b>MDC 13 - DISEASES AND DISORDERS OF THE FEMALE REPRODUCTIVE SYSTEM</b>				
N04B	HYSTERECTOMY FOR N-MAL, MINC	5	€6,850	8.144
N05A	OOPH&COM FAL TBE PR N-MAL,MAJC	< 5	€6,885	8.186
N05B	OOPH&COM FAL TBE PR N-MAL,MINC	148	€4,801	5.707
N06A	FEM REP SYS RECON PROC, MAJC	< 5	€5,757	6.845
N06B	FEM REP SYS RECON PROC, MINC	124	€3,508	4.170
N07A	OTH UTRS & ADN PR N-MAL, MAJC	992	€3,479	4.136
N07B	OTH UTRS & ADN PR N-MAL, MINC	1,822	€2,449	2.912
N08Z	ENDOS & LAPAR PR, FEM REPR SYS	532	€2,890	3.436
N09Z	OTH VAGINA,CERVIX&VULVA PROCS	1,542	€1,669	1.984
N10Z	DXC CURETTGE, DXC HYSTEROSCOPY	7,071	€1,517	1.803
N11A	OTH FEM REPROD SYS PR, MAJC	14	€4,713	5.604
N11B	OTH FEM REPROD SYS PR, MINC	8	€1,988	2.363
N12B	UTERUS & ADNEXA PR MALIG, INTC	< 5	€8,582	10.203
N12C	UTERUS & ADNEXA PR MALIG, MINC	41	€7,699	9.153
N60A	FEMALE REPROD SYS MALIG, MAJC	< 5	€922	1.096
N60B	FEMALE REPROD SYS MALIG, MINC	870	€706	0.839
N61A	FEM REPROD SYS INFECT, MAJC	30	€447	0.531
N61B	FEM REPROD SYS INFECT, MINC	38	€254	0.302
N62A	MNSTRL&OTH FEM REPR DIS, MAJC	50	€541	0.644
N62B	MNSTRL&OTH FEM REPR DIS, MINC	2,564	€416	0.494
<b>MDC 14 - PREGNANCY, CHILDBIRTH AND THE PEURPERIUM</b>				
O03A	ECTOPIC PREGNANCY, MAJC	< 5	€3,342	3.973
O03B	ECTOPIC PREGNANCY, MINC	37	€2,419	2.876
O04A	POSTPARTUM&POST ABORTN+OR,MAJC	0	€3,021	3.591
O04B	POSTPARTUM&POST ABORTN+OR,MINC	17	€1,934	2.299
O05Z	ABORTION WITH OR PROCEDURES	1,330	€1,700	2.021
O61A	POSTPART&POST ABORTN -OR, MAJC	153	€587	0.698

DRG	DRG Description	Indicative Day Cases	Day Case Price	Day Case RV
O61B	POSTPART&POST ABORTN -OR, MINC	1,723	€177	0.211
O63A	ABORTION W/O OR PROCS, MAJC	8	€475	0.565
O63B	ABORTION W/O OR PROCS, MINC	467	€464	0.552
O66A	ANTENATAL&OTH OBS ADM, MAJC	1,419	€1,249	1.485
O66B	ANTENATAL&OTH OBS ADM, MINC	8,340	€463	0.551
<b>MDC 15 - NEWBORNS AND OTHER NEONATES</b>				
P06B	NEO,ADMWT >=2500G+OR/VENT,MINC	< 5	€1,179	1.401
P60A	NEONATE -OR/V, D/TR<5D, MAJC	< 5	€1,058	1.258
P60B	NEONATE -OR/V, D/TR<5D, MINC	14	€818	0.972
P63B	NEO,ADMWT 1000-1249G-OR/V,MINC	< 5	€614	0.730
P65D	NEO,ADMWT 1500-1999G-OR/V,MINC	< 5	€522	0.621
P66C	NEO,ADMWT 2000-2499G-OR/V,INTC	< 5	€852	1.012
P66D	NEO,ADMWT 2000-2499G-OR/V,MINC	12	€833	0.991
P67B	NEO,WT>=2500G-OR/V,<37WKS,MAJC	5	€897	1.067
P67D	NEO,WT>=2500G-OR/V,<37WKS,MINC	7	€897	1.067
P68A	NEO,W>=2500G-OR/V,>=37WKS,EXTC	< 5	€1,232	1.464
P68B	NEO,W>=2500G-OR/V,>=37WKS,MAJC	27	€1,232	1.464
P68C	NEO,W>=2500G-OR/V,>=37WKS,INTC	59	€981	1.167
P68D	NEO,W>=2500G-OR/V,>=37WKS,MINC	181	€404	0.480
<b>MDC 16 - DISEASES AND DISORDERS OF THE BLOOD AND BLOOD FORMING ORGANS AND IMMUNOLOGICAL DISORDERS</b>				
Q02A	BLD&IMM SYS DIS+OTH OR PR,MAJC	< 5	€3,682	4.378
Q02B	BLD&IMM SYS DIS+OTH OR PR,MINC	306	€1,421	1.690
Q60A	RETICLEENDO&IMMUNITY DIS, MAJC	330	€1,238	1.472
Q60B	RETICLEENDO&IMMUNITY DIS, MINC	3,617	€1,200	1.427
Q61A	RED BLOOD CELL DISORDERS, MAJC	791	€1,197	1.423
Q61B	RED BLOOD CELL DISORDERS, INTC	12,780	€817	0.971
Q61C	RED BLOOD CELL DISORDERS, MINC	15,424	€279	0.331
Q62A	COAGULATION DISORDERS, MAJC	91	€2,022	2.404
Q62B	COAGULATION DISORDERS, MINC	3,261	€1,735	2.063
<b>MDC 17 - NEOPLASTIC DISORDERS (HAEMATOLOGICAL AND SOLID NEOPLASMS)</b>				
R01B	LYMPHMA&LEUKMA+MJR OR PR, MINC	21	€4,774	5.675
R02B	OTH NPLSTC DIS+MJR OR PR, INTC	6	€8,790	10.450
R02C	OTH NPLSTC DIS+MJR OR PR, MINC	25	€5,343	6.352
R03A	LYMPHMA&LEUKMA+OTH OR PR, MAJC	< 5	€3,372	4.009
R03B	LYMPHMA&LEUKMA+OTH OR PR, INTC	6	€3,372	4.009
R03C	LYMPHMA&LEUKMA+OTH OR PR, MINC	166	€2,550	3.032
R04A	OTH NPLSTC DIS+OTH OR PR, MAJC	29	€3,930	4.673
R04B	OTH NPLSTC DIS+OTH OR PR, MINC	802	€2,796	3.324
R60A	ACUTE LEUKAEMIA, MAJC	57	€1,397	1.661
R60B	ACUTE LEUKAEMIA, MINC	2,671	€1,333	1.585
R61A	LYMPHOMA&N-ACUTE LEUK, MAJC	494	€1,104	1.312



DRG	DRG Description	Indicative Day Cases	Day Case Price	Day Case RV
R61B	LYMPHOMA&N-ACUTE LEUK, MINC	9,722	€1,071	1.274
R62A	OTHER NEOPLASTIC DIS, MAJC	676	€503	0.599
R62B	OTHER NEOPLASTIC DIS, INTC	5,313	€459	0.546
R62C	OTHER NEOPLASTIC DIS, MINC	93,868	€301	0.358
R63Z	CHEMOTHERAPY	108,441	€617	0.734
R99Z	ONCOLOGY REPEAT ATTENDANCE	17,262	€572	0.680
<b>MDC18 - INFECTIOUS AND PARASITIC DISEASES</b>				
S65B	HIV, INTC	< 5	€1,094	1.300
S65C	HIV, MINC	18	€1,078	1.282
T01B	INFECT&PARAS DIS +OR PR, INTC	< 5	€5,148	6.120
T01C	INFECT&PARAS DIS +OR PR, MINC	13	€3,688	4.385
T60B	SEPTICAEMIA, INTC	< 5	€474	0.564
T60C	SEPTICAEMIA, MINC	18	€474	0.564
T61A	POSTOP&POSTTRAUM INFECT, MAJC	6	€887	1.054
T61B	POSTOP&POSTTRAUM INFECT, MINC	130	€672	0.798
T62B	FEVER OF UNKNOWN ORIGIN, MINC	30	€537	0.638
T63A	VIRAL ILLNESS, MAJC	250	€841	1.000
T63B	VIRAL ILLNESS, MINC	137	€261	0.311
T64B	OTH INFECT&PARASITIC DIS, INTC	7	€665	0.790
T64C	OTH INFECT&PARASITIC DIS, MINC	723	€586	0.697
<b>MDC 19 - MENTAL DISEASES AND DISORDERS</b>				
U40Z	MENTAL HEALTH TREAT+ECT, SD	23	€593	0.705
U60A	MENTAL HEALTH -ECT, SD, MAJC	349	€569	0.677
U60B	MENTAL HEALTH -ECT, SD, MINC	180	€523	0.622
<b>MDC 20 - ALCOHOL/DRUG USE AND ALCOHOL/DRUG INDUCED ORGANIC MENTAL DISORDERS</b>				
V65Z	TREATMT FOR ALCOHOL DIS, SD	7	€403	0.479
<b>MDC 21 - INJURIES, POISONING AND TOXIC EFFECTS OF DRUGS</b>				
X02A	MVSCLR TT/SKN GR INJ HAND,MAJC	< 5	€12,136	14.429
X02B	MVSCLR TT/SKN GR INJ HAND,MINC	7	€5,440	6.468
X04B	OTH PR INJURIES LWR LIMB, MINC	15	€3,263	3.879
X05A	OTH PR FOR INJ TO HAND, MAJC	35	€5,088	6.049
X05B	OTH PR FOR INJ TO HAND, MINC	260	€1,769	2.103
X06B	OTH PR FOR OTH INJURIES, INTC	27	€4,047	4.812
X06C	OTH PR FOR OTH INJURIES, MINC	215	€1,851	2.201
X07A	SKIN GRAFT, INJ EXCL HAND,MAJC	< 5	€8,017	9.531
X07B	SKIN GRAFT, INJ EXCL HAND,INTC	< 5	€6,617	7.867
X07C	SKIN GRAFT, INJ EXCL HAND,MINC	11	€4,506	5.357
X60A	INJURIES, MAJC	7	€770	0.915
X60B	INJURIES, MINC	492	€649	0.771
X61B	ALLERGIC REACTIONS, MINC	< 5	€741	0.881
X62B	POISON/TOXIC EFF DRUGS, MINC	22	€418	0.497

DRG	DRG Description	Indicative Day Cases	Day Case Price	Day Case RV
X63A	SEQUELAE OF TREATMENT, MAJC	11	€832	0.989
X63B	SEQUELAE OF TREATMENT, MINC	186	€739	0.879
X64A	OTH INJ,POIS&TOXIC EFFCTS,MAJC	< 5	€532	0.632
X64B	OTH INJ,POIS&TOXIC EFFCTS,MINC	5	€460	0.547
<b>MDC 22 - BURNS</b>				
Y02B	SKIN GRAFT OTHER BURNS, INTC	5	€4,956	5.892
Y02C	SKIN GRAFT OTHER BURNS, MINC	5	€4,306	5.120
Y03A	OTH OR PR FOR OTHER BURNS,MAJC	< 5	€4,533	5.389
Y03B	OTH OR PR FOR OTHER BURNS,MINC	< 5	€3,169	3.768
Y60Z	BURNS, TR<5D	< 5	€1,283	1.526
Y61Z	SEVERE BURNS	< 5	€1,009	1.199
Y62A	OTHER BURNS, MAJC	< 5	€766	0.911
Y62B	OTHER BURNS, MINC	56	€721	0.857
<b>MDC 23 - FACTORS INFLUENCING HEALTH STATUS AND OTHER CONTACTS WITH HEALTH SERVICES</b>				
Z01A	OTH CNT HLTH SRV +OR PR, MAJC	39	€4,903	5.829
Z01B	OTH CNT HLTH SRV +OR PR, MINC	598	€2,342	2.784
Z40Z	OTH CONTCT HLTH SRV +ENDOSC,SD	10,754	€700	0.832
Z61A	SIGNS & SYMPTOMS, MAJC	29	€580	0.689
Z61B	SIGNS & SYMPTOMS, INTC	103	€567	0.674
Z61C	SIGNS & SYMPTOMS, MINC	525	€543	0.645
Z63A	OTH FLLW UP SURG/MED CARE,MAJC	83	€590	0.702
Z63B	OTH FLLW UP SURG/MED CARE,MINC	1,110	€515	0.613
Z64A	OTH FACTORS INFL HLTH ST, MAJC	2,448	€614	0.730
Z64B	OTH FACTORS INFL HLTH ST, MINC	29,483	€380	0.452
Z65Z	CONGNTL ANML&PROB FR NEO PERD	85	€855	1.016
Z66Z	SLEEP DISORDERS	15	€520	0.618



